

SOFTWARE FROM BETASOFT

GAMES MASTER FOR THE SAM COUPE:

At last YOU can create stunning games and demos for the Coupe, with fast, smooth, animated sprites, complex sound effects, missiles, platforms, lifts, detailed backgrounds etc. No programming expertise required! Most of a game's design is specified by the menu-driven editor, which lets you edit graphics, animation, movement, sprite collision actions, sound effects, masking, control keys etc. A simple but very fast compiled language controls some features. A complex demo with animated bouncing sprites passing over and under each other, in front of a background, can be written with just a few commands to start the sprites off. (Once started, the sprites can act by themselves.) The editor produces stand-alone ROM-independent CODE programs that are free from any copyright restrictions - so you can sell your masterpiece! Impressive demonstration programs and an extensive sprite library are included to get you started. Backgrounds and sprites can also be grabbed from any Mode 4 screen and edited.

SIX SPRITE PLANES PLUS BACKGROUND
BIG SPRITES - UP TO A THIRD OF THE SCREEN AREA

TRUE COLLISION DETECTION ON SPRITE EDGE

SMOOTH, FAST PIXEL MOVEMENT OVER 100 ON-SCREEN SPRITES

POWERFUL EASY TO USE EDITOR COMPILED CONTROL LANGUAGE

COMPLEX MOVEMENT PATTERNS AND ANIMATION SEQUENCES

STEREO SPRITE-FOLLOWING SOUND EFFECTS

Written by Dr Andy Wright, author of the Sam ROM, MASTERDOS and MASTERBASIC, the program works with 256K or 512K RAM and ROM 2.0 and above. A comprehensive manual is included.

GAMES MASTER COSTS JUST £24.99 INCLUSIVE OF POSTAGE AND PACKING (ADD £1 IF OUTSIDE EUROPE). SPECIAL PRICE TO INDUG MEMBERS: £22.50 (QUOTE MEMBERSHIP NUMBER)

NEW !! Secrets of the SAM ROM revealed! The complete ROM 3 source listing on disk, extensively commented by the programmer, Andy Wright. Addresses and memory contents are included to make comparison with the actual ROM easy. The viewing program lets you move lightning-fast through the listing with various step sizes, perform searches, or list any part to a printer or (with MasterDOS) a disk file. A must for the serious SAM user! Just £9.95.

FILE MANAGER - The flexible file program. Files up to 780K. Requires MasterDOS and MasterBasic v1.7 or later (updates are free if you return your original disk. Enclose an SAE if you're not buying anything.) £12.99

MasterDOS - The DOS for the serious user. Faster, easier to use and more reliable than SAMDOS. Now available EXCLUSIVELY from BETASOFT. Offers RAMdisk and clock/calendar support, subdirectories, BACKUP, serial and random access files, multi-sector READ and WRITE AT, and much more! £15.99.

MasterBASIC - The much-praised SAM Basic extension adds many new commands for graphics, sound, printing, data-handling, improving DOS, searching and editing programs, etc. £15.99.

STILL AVAILABLE: Beta DOS for the PLUS D. More files per disk, much faster, random-access files, file compression, BACKUP and many other features. Fully compatible with existing disks and files. Only £9.95. BETA BASIC for the Spectrum (48K/128K+/+2) adds over 100 new commands and functions to Spectrum Basic. Versions available for Disciple/D, Discovery, or Tape/Microdrive. A classic for just £15.95!

Prices include P & P. Make cheques and postal orders payable to:
BETASOFT, 24 WYCHE AVENUE, KINGS HEATH, BIRMINGHAM, B14 6LQ

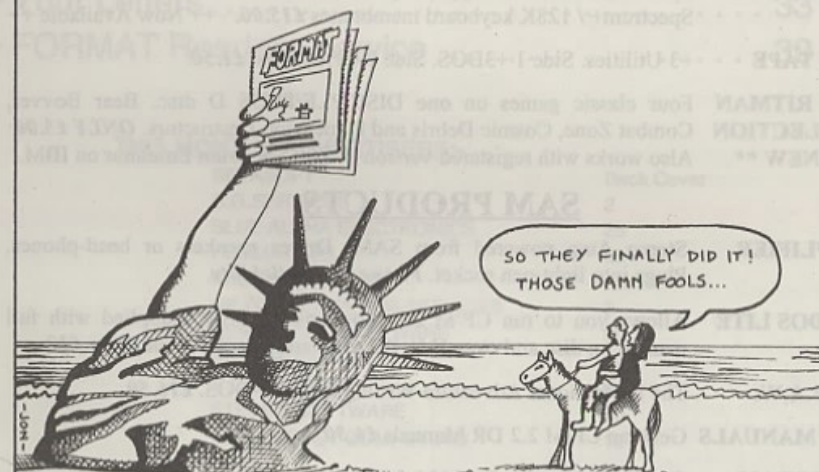
Vol.7 Nº12.

August 1994.

FORMAT

FOR SPECTRUM AND SAM USERS

SCIENCE FICTION CLASSICS, No. 302...



PLANET OF THE FORMATS

FORMAT The Mag That
Outlasts All Other Mags

£1.50 (UK R.R.P.)

ISSN 0963-8598.

B.G.SERVICES

64, Roebuck Road, Chessington, Surrey, KT9 1JX. Tel: 081-397-0763.

SPECTRUM PRODUCT

- +2A MOD KIT** Converts a black +2A into a genuine +2 with standard expansion port. This allows the PLUS D to operate properly. Includes replacement ROM, FIXER and full fitting instructions + manual updates. **£15.50.**
- THE FIXIT** Converts the +3 and +2a expansion port so that some 48K add-ons will work. Single port version **£9.50**, double port version **£10.50.**
- VTX5000** **SPECIAL OFFER** - V23 direct connect modem with viewdata software in ROM. Version for 48K or gray +2 (+2A/+3 users need FIXIT) - **£10.**
- PD TAPE 01** Comms software for VTX5000, VTX711 and RS232s. **ONLY £1.50.**
- Dr. SCROLL** Scrolling software for VTX5000. **£4.00.**
- MEMBRANES** Spectrum 48K (rubber type) keyboard membranes. **£6.00.**
Spectrum+ / 128K keyboard membranes **£15.00.** ++ Now Available ++
- +3 PD TAPE** +3 Utilities. Side 1 +3DOS. Side 2 CP/M files. **£1.50.**
- THE RITMAN COLLECTION** Four classic games on one DISCiPLE/PLUS D disc. Bear Bover, Combat Zone, Cosmic Debris and Dimension Destructors. **ONLY £5.00**
**** NEW **** Also works with registered version of Z80 Spectrum Emulator on IBM.

SAM PRODUCTS

- SAMPLIFIER** Stereo Amp powered from SAM. Drives speakers or head-phones. Plugs into light-pen socket. *Phone for availability.*
- PRO-DOS LITE** Allows you to run CP/M 2.2 programs on SAM, supplied with full manual on disc and over 1Mb PD software. **Special Trial Offer £12**
- THE P.A.W.** The Professional Adventure Writing for PRO-DOS. **£16.50**
- CP/M MANUALS** Genuine CP/M 2.2 DR Manuals **£6.50**
- DAY DREAM** Graphic Adventure for SAM **£4.50**

□ TURN YOUR PC INTO A SPECTRUM - NEW VERSION □

Spectrum 128K with Interface I and Microdrives. All emulated on your PC. Unregistered copy **£2.50** Registered version **£15.** (Registration gives DISCiPLE/PLUS D disc reader and design for tape input interface). Ready-built tape interface **£11.50** incl p&p.

□ RIBBON RE-INKING SERVICE □

Star, Citizen and other standard fabric ribbons re-inked for **£1.50** each + return postage.

Please allow 28 days for delivery. All prices include UK postage and packing.
Overseas customers please add £2 on modems; PRO-DOS and +3 CP/M, add £1 on all other items.
Please make cheques/postal orders payable to B.G.Services.

BGS-1.10

CONTENTS

Vol.7 N°12.

August 1994.

| | |
|-------------------------------|----|
| ♦ News On 4 | 4 |
| ♦ The Editor Speaks | 5 |
| ♦ Music 48 | 7 |
| ♦ A Pin Up | 15 |
| ♦ The Help Page | 20 |
| ♦ BASICally Speaking - Part 9 | 23 |
| ♦ Analogue And Digital States | 27 |
| ♦ Small Ads | 29 |
| ♦ Memo For Driver | 31 |
| ♦ Your Letters | 33 |
| ♦ FORMAT Readers Service | 39 |

THIS MONTHS ADVERTISERS:-

| | |
|--------------------------|------------|
| BETASOFT | Back Cover |
| B.G.SERVICES | 2 |
| BLUE ALPHA ELECTRONICS | 25 |
| FORMAT DX1 | 25 |
| FRED PUBLISHING | 18 |
| HILTON COMPUTER SERVICES | 8 |
| REVELATION SOFTWARE | 30 |
| RICHARDSON & CO | 22 |
| S.D.SOFTWARE | 6 |
| STEVE'S SOFTWARE | 26 |
| WEST COAST COMPUTERS | 12 |

FORMAT ISSN 0963-8598

© Copyright 1994 FORMAT PUBLICATIONS. All Rights Reserved.

No part of this publication may be reproduced, in any form, without the written consent of the publisher. The purchaser of this magazine may copy program material published herein for his or her own personal use and provided that any such programs are erased if and when the purchaser disposes of this magazine in any way. While every effort is made to ensure accuracy in FORMAT the publisher will not be held liable for any errors or omissions.

FORMAT is published by **FORMAT PUBLICATIONS.**

34, Bourton Road, Gloucester, GL4 0LE, England.

Telephone 0452-412572. Fax 0452-380890.

Printed by D.S.Litho. Gloucester. Telephone 0452-523198.

NEWS ON 4

FUTURE FOR SALE

Computer magazine giant Future Publishing is up for sale. The company, based in Bath, is continuing 'Business as Usual' while negotiations go on with several interested parties including their arch rivals EMAP and VNU.

Chris Anderson, founder of the company and its Chief Executive, has been putting much of his efforts into a US publishing division for some time now. It is expected that he will take full control of the US company when the British side is sold in the next few months.

Future have a very large turnover, £42 million last year, all based on computer and electronic games mags. They were of course the former publishers of *Your Sinclair*.

ITS A FUNNY OLD GAME

The Football season starts early this year, at least for 48K/128K Spectrum owners. 'It's A Goal' is a new football arcade game which includes features like ball control, computer controlled goalkeepers, selectable team formations, 1 or 2 player games, World Cup '94 and Anglo-Scottish league competitions to play in.

The game costs £4.50 including UK p&p and is available on tape or 3½" disc from Brendan O'Brien, 22 Garron Crescent, Larne, Co. Antrim, Northern Ireland, BT40 2AT. Make cheques payable to Brendan O'Brien.

NEW AMSTRAD PRINTERS

Amstrad are to re-enter the printer market in a new collaboration with

Swedish firm Jarfalla ICC which is partly owned by IBM.

The first joint development will be a new ink-jet printer which will be available under the Amstrad badge as well as at least one other brand-name.

Jarfalla is still 35% owned by IBM. It was wholly owned until IBM's cut backs over the last year or so. The tie-in with Amstrad is seen as a way for Jarfalla to remove its reliance on IBM without the need to build its own sales and marketing wing.

Printers are also seen as the new growth market in Europe. As computer sales continue to slow the scramble to produce better and better printers, at lower and lower prices, looks set to make or break a few companies over the next two years.

COMMODORE FUTURE LOOKS BLACK

Although Commodore UK is putting on a brave face, the future of the Commodore world still hangs in the balance. Despite many rumours, there is still no sign of a buyer being found for Commodore International. It now looks certain that the company will be broken up into small sections for sale.

There are several interested parties who would be prepared to take over some of Commodore's research and development projects, but the big question is will the Amiga survive beyond the large stocks that already exist.

Credits: D.R.Howder.

URGENT we need your news. Anything you think other people should know about. Each item printed earns the contributor 3 months extra subscription (please claim when next renewing).

The Editor Speaks

Remember that last month I asked for your nominations for the 'Top Ten' people in home computer history. Well, get a move on, closing date for the voting is 30th September 1994 and so far there have only been a handful sent in. Provided we get enough entries to make it worthwhile then all entries will also be put into a prize draw so come on you lot, get voting.

I've had lots of letters asking for more program listings to be printed in **FORMAT**. Well there are several nice ones lined up for you in the next few issues, but I still need more material to help fill future **FORMAT**s. Several people have written asking about the copyright situation on programs that originally appeared in old magazines like *Sinclair User* or the much lamented *ZX Computing*.

Well, this is a slightly difficult area but as far as I can tell the situation is this. As the mags in question no longer exist then it is possible to reprint programs provided that the author and magazine are fully credited (i.e. Program by X.Y.Zebra, originally published in ABC Issue 24, June 1983). In other words, do not claim the program as your own - give credit where credit is due. If you are translating an old Spectrum program to SAM then mention the original in the same way.

All we need is the program on disc (**DISCIPLE/PLUS D** or **SAM**) together with a reasonable write-up on what it does. This text should be saved as an ASCII word processor file (no printer control codes or page breaks). This can come from any word processor and we can even take MS-DOS discs if that is

what you do your word processing on. Please enclose a printed copy so we can read it straight away, also note what word processor you used as that helps us in the transfer stage.

Oh yes, don't worry about the spelling, grammar or layout, we will get that into order for you - well Jenny will anyway, as you all know I can't spell either. Just do your best and leave the rest to us.

One thing worth remembering is that the majority of Spectrum/SAM users around today were not readers of the mags in the good old days (the 1980s that is), so they have never seen the wealth of material that was published during the early years of the Spectrum.

Anyway, now you have some guide-lines to work to, I want to be flooded with material.

Sorry there is no **SHORT SPOT** this month, The post office were a bit slow in moving it the few miles from John Wase's location to mine (the old stage coach mail was faster in 1894). Anyway, he will be back next month and the side effect is that I have been able to run a large program called **Music 48**. I know a lot of you have been after something like this for some time, but it always seems to get squeezed out due to lack of space. Anyway, I hope you like it and consider it worth the effort to type in.

Next month will be another Birthday issue - another year older and still going strong. There will also be news next month of the third Gloucester Show - something I know many of you are really looking forward to.

Until next month.

Bob Brenchley, Editor.

SD Software



Quality Serious Software For Spectrum & Sam Coupé

THE FRACTAL COLLECTION

A fast fractal generator for the ZX Spectrum. Now you can explore the fascinating world of fractals with this machine code program. Up to 200 shades on screen gives clear, crisp fractal pictures which can then be zoomed and expanded. Not just the Mandelbrot set but 18 different types can be made. Generates fractal music, you can hear the computer generate the fractal. Ready to use on disc for DISCIPLE/Plus D complete with ready-converted file for use with our SPECMAKER emulator on SAM.

SPECMAKER The simplest Spectrum emulator on the market for SAM. 1000s of 48K programs work without the need for any conversion. Most other programs need only minor changes. All the extra SAM keys work in Spectrum mode. Uses SAM's parallel printer port and up to 360K of SAM's memory as a RAMDISC. Plus D, DISCIPLE and Opus discs* can be loaded into SPECMAKER and saved to SAM disc. Can now convert files between Messenger and SPECMAKER format and so save on valuable disc space. Now comes with pre-converted Spectrum ROM image - no need to have a Spectrum available anymore. Supplied on 3 1/4" disc. *Requires MasterDos and MasterBasic to use Opus single density discs

PC-SUITE From the same author as SPECMAKER. Now you can transfer your IBM data files by reading and writing IBM discs (720K format) on your SAM Coupé. PC-SUITE will even let you format IBM discs on your SAM. Write and edit SAM Basic programs on your PC. Use PC-SUITE to copy SAM data files to PC so you can print them on that high quality laser printer at work... nb. This is not a PC emulator.

As used by Format Publications to transfer articles/programs for this mag.

SPECFILE+ Now a Spectrum data filing program that never gets out of date. Specfile+ holds a massive 28K of data and, by using compression makes it seem like much more. Free-format style means no complicated file design before you get started. Very fast CASE, selective and complex searches. Designed to be extended - so it grows as you do. Works with PLUS D, DISCIPLE or under SpecMaker on SAM. This program is a must for anyone with data to store. Special +3 version also available on 3" - add £2 to price shown below.

UNIDOS version 2. The advanced DOS from Steve Warr for the PLUS D and DISCIPLE. Same DOS system file for BOTH interfaces. Random Access Files; Sub Directories; Hundreds of files on one disc; Hidden files; Protected files; Copy files of ANY length; incredibly versatile Screen Dump routines; Error Trapping and MANY more features. Compatible with all Spectrums (+2a/+3 in 48K mode). Over 20 programs now included on the disc. As used in the new DX1.

State DISCIPLE or PLUS D on order

| PRICES: | Non Members | INDUG Members |
|------------------------|-------------|---------------|
| The Fractal Collection | £5.95 | £4.95 |
| Specfile+ | £12.95 | £9.95 |
| UNIDOS | £25.95 | £19.95 |
| Createfile Manual | £6.50 | £5.50 |
| SpecMaker | £12.95 | £9.95 |
| PC Suite | £25.95 | £19.95 |
| IBU* / SAM IBU | £4.90 | £3.50 |
| File Convertor* | £5.30 | £4.00 |
| Hacker's Workbench* | £9.90 | £8.50 |

*GDOS programs still available

Please add £0.50 postage (£1.20 outside UK)

Spectrum Owners

Don't forget to say if ordering for PLUS D or DISCIPLE and state disc size - 3 1/4" or 5 1/4" (80 track only).

INDUG MEMBERS

Don't forget your membership number if claiming discount

S.D. Software,
70, Rainhall Road,
Barnoldswick,
Lancashire,
England, BB8 6AB.



MUSIC 48



By:- Steve Warr.

In a bored moment recently, I remembered a demo program that had rather impressed me about four years previously and how I had mentioned to someone that I was thinking about writing an improved version that would be more user-friendly and have loads more features.

Well it really was quite a challenge (and a senseless waste of a time) but here it is, the definitive music program for the 48k Spectrum. It's gone through about ten rewrites but the sound quality is almost bearable now. It's long (just under 3k of code), and you'll probably end up with sore fingers typing it in, but I hope you find that it's worth it.

The program takes strings of data in a similar format to the 128k Spectrum's PLAY command. However there are actually 4 music channels (rather than 3) with completely independent volume and envelope control. A fifth channel provides a beat with 10 pre-programmed white(ish)-noise effects, 1 special effect and the ability to add extra effects if required.

Listing 1 is the actual program. It's got quite a lot of error checking and should spot any typos in your data and tell you where they are - it's probably a good idea to save the program regularly as you type it in to prevent you losing everything through a crash. Make sure you stick to the same line numbering scheme because this is part of the error checking. If it runs successfully, it will

create a file called "music_code" and verify it. It then saves itself (just in case) and then NEWs - don't panic, all is well! Of course, you will have to modify the LOAD/SAVE lines in all the listings if you don't use a disc system.

Listing 1.

```

5 READ ADDR: CLEAR ADDR-1
10 RESTORE : READ ADDR
20 LET A=ADDR: LET L=1010
30 RESTORE L: LET S=L
40 PRINT AT 0,0;"Reading line: ";L
50 FOR F=2 TO 24 STEP 2
60 READ D: LET D1=INT (D/256):
  LET D2=D-D1*256
70 POKE A,D2: POKE A+1,D1
80 LET S=S+F*(D2+1)+(F+1)*(D1+1)
90 LET A=A+2: NEXT F: READ C
100 IF S<>ABS C THEN PRINT "Err
  or in Line ";L: STOP
110 LET L=L+10
120 IF C>=0 THEN GOTO 30
130 PRINT "Data OK"
140 PRINT "SAVING "music_code
  ""
150 SAVE d1"music_code"CODE ADD
  R,2914
160 PRINT "VERIFYING "music_c
  ode""
170 VERIFY d1"music_code"CODE A
  DDR,2914
180 PRINT "SAVING "music_poke
  ""
190 SAVE d1"music_poke" LINE 5
200 PRINT "Press any key to ne
  w..."
210 PAUSE 0: NEW
1000 DATA 49151
1010 DATA 49536,65342,29217,1300
  3,52069,24866,10955,23563,8
  669,49307,62413,56771,48927
1020 DATA 52513,52672,50163,8669
  ,49408,62413,56771,12833,52
  
```


NEW RELEASE for the SAM Coupe ...

from the keyboard of Jack Gibbons (*author of the best Banking programs in the world!*)

**** personal filing system ****

The definitive database for the SAM Coupe

1000's of uses - can store anything - change it - sort - search
extract - very easy to use - on screen help - scrolling summary
displays with zoom, plus page up/page down, home/end, locate
record - four print formats, summary, detail, label and mail merge
uses all available memory/disk space - massive data storage, over
1 MEG* - design/re-design screens any time - inbuilt totalling -
field validation - table lookup/validation - WYSIWYG screen and
report design - add/change field structure any time - automatically
restructures your data - uses index and random access files*
password control - operates on any SAM Coupe, 1/2 drives,
256/512K, can use 1 MEG memory expansion* - RAM drives

50 page user manual - after sale support
auto-configures for 1/2 drives, 256/512K RAM, SAMDOS,
MasterDOS/MasterBASIC, 1 MEG - no need to edit program lines

*requires MasterDOS/MasterBASIC

Send £19.95 (inclusive of post/packing)
specifying SAMDOS(512K) or MasterDOS/MasterBASIC

to Hilton Computer Services Ltd
3 Suffolk Drive, Guildford, Surrey, GU4 7FD

or phone 0483 578983 and pay on receipt of order.

Buy with confidence - over 12 years in business:
other products available - send SAE for details.

| | |
|--|---|
| 673,50163,8669,49719,51986 | 50,14122,32450,34595,34886 |
| 1030 DATA 4301,15044,49279,2022, 11570,62402,29677,52067,289 ,8704,49727,545,31472 | 1230 DATA 7736,14114,5826,56576, 606,29661,51716,50050,20290 ,33485,8643,52023,40027 |
| 1040 DATA 8706,49725,22447,26463 ,55663,24407,28519,48958,18 413,24301,30459,54757,50538 | 1240 DATA 24073,22051,16107,5964 8,52715,49920,9195,54552,0, 0,0,0,21335 |
| 1050 DATA 30241,8896,49476,42189 ,10945,49729,16162,53698,45 025,56584,56353,960,44024 | 1250 DATA 0,0,13565,56785,1382,2 8381,60676,16219,47042,2122 9,61386,60354,52315 |
| 1060 DATA 7129,15482,1,15872,819 2,54056,4350,59134,54023,16 894,65040,1,35394 | 1260 DATA 29405,56581,1139,32477 ,42758,33482,20419,32477,38 151,296,56655,1905,36203 |
| 1070 DATA 60160,60169,15624,1567 7,6152,6928,0,0,0,0,0,570 9 | 1270 DATA 13088,32477,56585,2251 ,10310,56581,2694,792,38621 ,56330,49854,30685,41725 |
| 1080 DATA 0,11008,15484,1,15872, 8192,54056,4350,59134,54023 ,16894,65040,39280 | 1280 DATA 7945,710,58951,8188,32 799,16331,16331,8488,30685, 12258,10950,30685,42156 |
| 1090 DATA 1,0,9,15624,15677,6152 ,11024,0,0,0,0,0,4641 | 1290 DATA 56801,58571,31206,5187 9,50050,5396,1056,14523,314 89,9839,8704,49729,31035 |
| 1100 DATA 0,0,55552,31259,316,0, 62,10272,65235,65040,2022,6 5235,37841 | 1300 DATA 56777,58571,6310,45030 ,18141,51976,10304,15617,26 827,7712,18635,4392,31891 |
| 1110 DATA 4161,510,0,2539,2283,1 5677,2109,4120,27,0,0,0,106 73 | 1310 DATA 30823,16878,30685,5888 8,31812,3776,56576,1649,521 69,10320,56822,2251,43007 |
| 1120 DATA 0,0,0,0,31787,316,0,62 ,10272,65235,65040,2022,277 42 | 1320 DATA 51694,52189,44552,5150 3,22237,56577,94,4891,4890, 12423,8486,49910,33071 |
| 1130 DATA 65235,4161,510,0,2304, 2048,15677,2109,4120,43,0,0 ,9189 | 1330 DATA 20453,6,3105,2499,9086 ,28518,36585,38339,39619,42 691,43715,46787,50905 |
| 1140 DATA 0,0,0,0,0,2223,30410,1 5808,1615,56831,459,10334,3 1397 | 1340 DATA 51907,53699,58311,5139 5,60615,20419,6,43297,2505, 9038,56646,62576,43561 |
| 1150 DATA 60194,60169,52189,2411 5,7464,777,20441,65286,5218 9,24220,4904,2539,37090 | 1350 DATA 29149,56819,65406,3068 5,56797,3198,30685,42758,12 072,30685,54535,5727,40450 |
| 1160 DATA 56811,52939,10334,2318 ,30915,192,21443,6337,227,2 6819,961,30915,40706 | 1360 DATA 52480,50050,56785,3454 ,30685,56584,3710,30685,565 85,58571,56806,2894,47240 |
| 1170 DATA 62912,10981,49729,3178 7,8373,8467,49726,8245,1101 8,9086,8567,49245,29597 | 1370 DATA 8205,56581,2507,3238,1 0558,56721,57969,30685,5680 1,370,29661,56576,45455 |
| 1180 DATA 17442,10945,49727,1667 4,57794,64497,16073,56191,8 190,2104,65086,65243,50681 | 1380 DATA 854,24285,56578,1394,2 9661,10756,49729,60727,5537 8,21485,49729,61897,47357 |
| 1190 DATA 53791,51138,14077,465, 65313,8959,49729,8669,49307 ,52189,32259,17356,46764 | 1390 DATA 14045,989,56088,1771,6 144,60163,9030,60238,28893, 56579,625,6857,35744 |
| 1200 DATA 56770,52513,56768,971, 52350,49731,8669,49408,5218 9,32259,17356,56770,48533 | 1400 DATA 4627,60361,9054,60246, 51253,61675,4783,6857,30685 ,20450,10558,56721,46185 |
| 1210 DATA 12833,56769,971,52350, 49731,8669,49719,52189,3225 9,52674,10951,49727,46601 | 1410 DATA 57719,14045,12,52189,5 9108,6857,30685,4875,56602, 3703,6675,30685,37042 |
| 1220 DATA 24285,56578,1150,10389 ,5641,24320,29661,49668,500 | 1420 DATA 4876,56602,2679,6675,3 |

0685,51469,13821,56785,971,
6398,6818,28519,40634
1430 DATA 15650,51650,14045,989,
14045,10466,14045,481,14045
,12,18490,3932,31601
1440 DATA 3855,2022,4342,30685,4
84,4,24073,22051,20003,1795
5,8995,10981,25521
1450 DATA 52065,29917,56577,117,
45432,62,544,32830,30685,56
579,566,56592,32150
1460 DATA 1334,56576,1078,56577,
25889,56779,52,14045,769,14
045,2,45432,30271
1470 DATA 51425,52709,50974,3249
1,51879,50873,18686,46282,4
550,50262,65237,51745,55079
1480 DATA 50893,12502,63962,5677
2,203,8278,65057,32266,1285
6,57318,18686,4570,44706
1490 DATA 32453,65059,51791,5065
3,22270,59594,65221,51797,5
0714,31181,199,65150,54336
1500 DATA 55866,50924,65059,5179
5,50905,21758,3530,65223,32
332,58912,12542,26314,51333
1510 DATA 55751,33,1536,55562,33
29,52481,50989,491,51597,32
265,55787,22,35184
1520 DATA 6495,32473,11774,3616,
52189,22016,1056,55587,5659
2,31181,2247,31961,40144
1530 DATA 65478,33086,206,28365,
31943,50343,51054,52605,510
54,56793,203,49750,51812
1540 DATA 50698,9086,9982,19752,
2062,9214,3624,65037,10276,
58889,65278,10280,34795
1550 DATA 11091,14,52189,22016,3
7314,56772,350,9086,16854,8
446,824,57318,41683
1560 DATA 65053,12295,58671,3945
7,1737,33024,2383,5206,8744
,57621,34683,20359,30754
1570 DATA 33159,54914,65033,1236
0,51991,10363,44809,52189,2
2016,544,32830,52189,38181
1580 DATA 48642,29464,31181,1479
,31181,1735,26385,11211,181
23,8227,6692,65159,35808
1590 DATA 12298,60259,3151,6,235
6,33598,28365,56775,715,609
26,24907,29131,44109
1600 DATA 28707,45035,28365,6343
,6718,32715,17440,10407,602
17,34613,1615,2304,29253
1610 DATA 11078,60238,32453,1100
6,4128,291,357,11725,32455,
20222,288,31523,31903

1620 DATA 2072,11262,574,544,448
35,705,15875,52612,51054,52
601,51054,50040,42331
1630 DATA 51054,31181,967,31181,
1223,31181,1991,1793,52481,
50989,30685,6145,34448
1640 DATA 290,16,11725,60359,322
57,2505,60238,52189,65025,4
2873,3368,52189,45209
1650 DATA 48641,34110,28365,3117
5,28365,32455,20222,9152,56
702,203,51798,50347,49888
1660 DATA 60611,32454,22782,2409
6,291,251,11725,42951,11048
,61446,32715,3368,36056
1670 DATA 61694,1336,4097,6160,1
564,60687,34628,30799,6,868
3,51767,42505,29544
1680 DATA 17955,65259,14352,3844
,3855,15375,50511,65150,342
,65320,7456,291,26777
1690 DATA 16,11725,60359,32257,2
505,60286,20295,61670,3855,
3855,18304,34564,32777
1700 DATA 34688,32327,22526,3731
4,9156,453,8,11725,49607,63
185,51984,10311,41788
1710 DATA 1028,288,5192,51733,50
677,16117,52614,51054,15481
,28365,30919,28365,47738
1720 DATA 31687,28365,31431,2836
5,61895,1987,57798,34622,43
76,56801,638,49831,46937
1730 DATA 50641,34878,52189,2201
6,296,49980,51054,32291,650
59,51233,8359,50168,43958
1740 DATA 50321,54910,65072,1229
8,24566,32291,15870,10363,5
0703,6155,54792,65072,37132
1750 DATA 12298,9188,49980,50517
,34595,1615,60160,19745,250
7,54763,16077,58311,45111
1760 DATA 9075,57714,3608,35390,
28365,455,267,11725,52679,5
1054,2755,8646,39808
1770 DATA 11249,8677,50988,8677,
1,42435,53,52677,51006,3142
5,8359,31536,39402
1780 DATA 14520,47404,6360,32296
,12502,2814,9520,5727,8960,
54910,65072,53258,35643
1790 DATA 31311,6910,4400,60281,
17449,10573,2345,1848,1615,
2304,12523,52706,30161
1800 DATA 51065,52482,51065,5862
5,24874,30667,8739,52065,51
681,32477,50688,12849,41572
1810 DATA 51179,56781,57799,3172
5,23613,32497,65013,459,649

42,12491,50254,3789,52041
1820 DATA 33,64768,14196,29949,8
742,23563,8748,23574,45261,
64790,14283,52654,40567
1830 DATA 3438,52221,60930,59921
,455,3,15565,61728,18115,52
499,51165,31683,45495
1840 DATA 61723,52189,65027,1382
1,49361,56781,60871,25467,8
651,10072,51673,8701,51818
1850 DATA 23610,16115,60735,6074
3,64342,9417,14880,18816,30
318,27745,25705,20000,35452
1860 DATA 29807,8293,24900,57716
,24918,30060,8293,30789,259
68,29795,58469,24918,37446
1870 DATA 30060,8293,30031,8308,
26223,21024,28257,58727,248
98,8292,25934,29811,33467
1880 DATA 28265,20199,29541,2699
6,26478,21536,28527,17440,2
5957,20208,29807,8293,34447
1890 DATA 30789,25968,29795,5846
9,28494,25972,20256,29813,2
8448,8294,24914,26478,32761
1900 DATA 17893,28781,31092,2102
4,28773,24933,21748,28527,1
9744,28257,8313,26964,33804
1910 DATA 25701,20000,29807,6230
9,7686,536,2054,30799,7686,
3951,31079,65235,31615
1920 DATA 32045,8253,31229,6390,
65235,1086,26500,8253,4349,
51690,286,59425,39309
1930 DATA 259,6,3019,50386,9160,
18123,49354,52168,63207,629
76,54016,254,50063
1940 DATA 49669,51363,49677,5136
3,52169,6311,14320,210,5376
0,0,210,0,31762
1950 DATA 6144,7908,8464,3864,41
66,61182,54032,9214,4166,61
182,54032,7678,42796
1960 DATA 60960,7881,3597,16703,
65040,4334,65235,2507,4161,
61182,54032,7678,45042
1970 DATA 60704,4553,1058,792,12
305,28418,14,4161,63230,540
32,31230,20354,35545
1980 DATA 4167,32254,65235,8221,
51693,23585,20224,42878,590
80,45336,65235,6179,44003
1990 DATA 8693,896,16390,32335,6
374,54193,15870,64800,4141,
51700,65313,1539,39423
2000 DATA 20416,59006,45336,6523
5,4141,51703,801,1536,20246
,58821,32089,15819,38644
2010 DATA 15819,58927,20227,6,56

699,53537,4355,1,2525,54477
,57603,65297,36692
2020 DATA 60672,49498,56336,201,
513,1027,2054,3338,4880,667
8,8990,552,12439
2030 DATA 1027,2054,4108,8216,16
432,2400,11,1026,1797,2568,
511,65283,18480
2040 DATA 2054,446,421,397,375,3
54,334,315,297,281,265,250,
17256
2050 DATA 236,223,210,199,187,17
7,167,158,149,140,132,125,2
6836
2060 DATA 118,111,105,99,94,88,8
3,79,74,70,66,63,14604
2070 DATA 59,56,53,50,47,44,42,3
9,37,35,33,31,8500
2080 DATA 30,28,26,25,23,22,21,2
0,19,18,17,16,5500
2090 DATA 15,14,13,12,12,11,10,1
0,9,9,8,8,3936
2100 DATA 7,65295,32783,21775,16
399,13071,11023,9487,8206,7
182,6670,5902,12610
2110 DATA 5390,5134,4622,4366,41
10,3853,3596,3339,3339,3082
,3082,2825,6482
2120 DATA 2825,2568,2568,2568,23
11,2311,2311,4125,4125,4125
,3868,3868,7938
2130 DATA 3611,3611,3354,3354,33
54,3354,3097,3097,3097,2840
,2840,2840,8339
2140 DATA 4140,4140,3883,3883,38
83,3883,3626,3626,2326,2326
,3369,3369,10418
2150 DATA 3369,3369,4155,4155,41
55,4155,4155,3898,3898,3898
,2855,2855,12963
2160 DATA 3641,3641,3641,2598,25
98,2598,3384,3384,4170,4170
,4170,3909,14423
2170 DATA 3909,3909,3909,3909,39
09,3656,3656,3656,3656,2870
,2870,4185,15593
2180 DATA 4185,4185,3399,3399,33
99,3925,3925,3925,3925,3142
,3142,3142,16729
2190 DATA 3142,3671,3671,4200,42
00,2356,2356,2356,2885,2885
,3414,3943,16609
2200 DATA 3943,3943,3943,3943,42
15,4215,4215,4215,4215,5131
9,51323,51355,37080
2210 DATA 51410,51434,51458,5146
3,51489,51504,51523,51539,5
1581,51581,51581,51581,5139
0

WEST COAST COMPUTERS

Below you will find details of the full range of SAM hardware now available.

| CODE | DESCRIPTION | PRICE |
|---|--|---------|
| Presenting the NEW SAM elite , the latest computer in the SAM family. 512K RAM, Single or Dual Drive Machines <i>now with Built-in Printer Interface.</i> | | |
| W1010 | *** NEW *** SAM elite - 512K - Single Drive. *** NEW *** | £199.95 |
| W1011 | *** NEW *** SAM elite - 512K - Dual Drive. *** NEW *** | £259.95 |
| INTERFACES (work with both SAM elite and SAM Coupé unless otherwise stated) | | |
| W1101 | SAM Disc Drive Upgrade. Have a second drive fitted to your SAM elite or Coupé. Factory fitting and return postage included in price. Ring 0452-412572 for instructions on how to return your computer. | £79.95 |
| W1102 | External Parallel Printer Interface. (for Coupé) | £24.95 |
| W1103 | RS232/Parallel Interface (COMMS). (for Coupé) | £34.95 |
| W1104 | 1 MegaByte External Memory Pack. (Needs MasterDOS to run from Basic). | £89.95 |
| W1106 | SAM Mouse System. Interface, Mouse and Software. Plugs into mouse port on rear of SAM. More and more software now works better is you use a mouse. | £39.95 |
| W1107 | External Disc Drive Interface and Parallel Printer Port (for Coupé) | £44.95 |
| W1108 | Internal 256K Upgrade (for older SAMs with only 256K of memory) | £34.95 |
| W1109 | TWO ^{UP} allows two interfaces to be connected to SAM at same time. Special Offer - Save £5 if ordered at the same time as any SAM interface. | £24.95 |

E. & O.E.

UK Postage & Packing: Add £6 for computers (sent by insured carrier).

All other items add £1 per item (max £5) free if ordered at same time as a computer.

Overseas customers: Please write for quote on Airmail Insured Delivery Service.

Write your order clearly on a reasonable sized piece of paper, state your name; address and phone number. Cheques, Postal Orders, Euro-cheques, should be made payable to **West Coast Computers Ltd.** We will try to dispatch your orders as quickly as we can - however please allow 28 days to be on the safe side. Some items have to be produced in batches and where this may cause a longer delay we will write to you as quickly as possible.

RAM SHORTAGE. Given the current shortage of RAM chips we may only be able to hold the current prices on SAMs, 256K upgrades and 1meg memory packs for short time. Any order received by 1st September will be accepted at the above prices - thereafter please see our next advert.

IMPORTANT NOTICE

To order any of the above items please send your order to:-

West Coast Orders, Format Publications, 34 Bourton Road, Gloucester, GL4 0LE.

Make cheques payable to West Coast Computers Ltd.

2220 DATA 51581,51581,51581,5158
1,51581,0,0,0,0,0,0,0,-1332
9

Well, that's the big one out of the way, it is all fairly simple from now on.

Listing 2 is the general form of a music routine. Type RUN 9999 to save it. When you load it back, it will auto run to line 9900 and restore the machine code ("music_code") to memory.

Line 1 is the important one because it defines a music function (FN p) which takes 5 string parameters - the 5 channels. Line 1000 is the one that actually plays the music by calling this function. Any channel not in use should just be replaced by a null string, "". Listing 2 is just a demo to play a chord - type it in and try it with RUN 9900.

When you call the music function, all 5 data strings are scanned before the music starts, to see if they contain valid data. If not then an error message will be printed of the form: \$2: Illegal note data (This means that an error was found in the 2nd string). The note data should be of the form:-

c,d,e,f,g,a or b - notes in lower octave

C,D,E,F,G,A or B - notes in upper octave.

a # in front of a note makes it a sharp

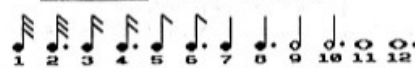
a \$ in front of a note makes it flat

(so #a = \$b.)

& = a rest.

The length of notes and rests is controlled by placing a number between 1 and 12 in front of the notes. Figure 1 shows what the numbers mean, eg. "5abc" will play 3 quavers. Tied notes can be played by placing a "-" between numbers, eg. "5-9-3#F".

Figure 1: Note Lengths



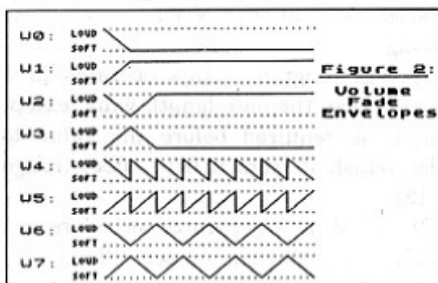
The rest of the data in each string affects how the notes sound. The following letters **MUST** be in capitals. Each string has its own set of settings which remain valid for all following notes until the next control data is found.

H - when reached, an 'H' immediately halts the music, otherwise, the program continues until the end of all 5 data strings has been reached.

O<octave> - alters the current octave. The number should be in the range 1-7. (1 is low, 7 is high).

V<volume> - alters the current volume. The number should be in the range 0-15. (15 is loud, 0 is off altogether).

UX<speed>[V<initial-volume>]W<envelope> - allows envelope control of volume. The speed is in the range 0-240. (1 is a fast envelope, 240 is slower, 0 is constant volume). The possible envelopes are shown in Figure 2. The 'V' and initial volume are optional and can be left out.



!comments! - exactly like that.

(<data>) - plays the note data in brackets twice, (<data>)*<number> :- plays the note data 1-100 times, (<data>)+ :- repeats the note data forever (or until an 'H' is reached in one of the other data strings).

N - Used to separate the number in one of the above commands from a note length value, eg. "O4UX50W1N3a".

The fifth data string, used to control

With a little editing (removal of any 'M' commands and altering of fade

```

1 DEF FN P(V$,W$,X$,Y$,Z$)=US
  R 49153
10 REM *****
11 REM * This is a piece of *
12 REM * music written by *
13 REM * Simon Bates and *
14 REM * first printed in *
15 REM * CRASH magazine. *
16 REM *****
100 LET D$="UX2W004(3Eabe)*12"
110 LET E$="05(eeeeeeee)*4"
120 LET F$="V1104(6D#C5b6ag5#f6
  e#f5g9a6D#C5b6ag5#f6e#f5e9d
  )"
130 LET G$="V1304(5eg3#fed5e3g#
  fe5d)"
140 LET H$="V11(5$eg3f$ed5$e3gf
  $e5d)"
150 LET I$="UX2W6(3$ED$Eg)*8"
160 LET J$="UX2W004N9&&(3b#CD#F
  b#CD#Fb#CD#Fb#CD#F)"
170 LET K$="(##C#C#CDDbb)*4"

```

A PIN-UP

This is a sample quality. Both sa pitch, with a 1/6 9-pin Swift 9.

This is a sample t quality. Both sa pitch, with a 1/6 24-pin Swift 200C.

Fig.1.

In order to make the machine even more idiot-proof, they have also done

away with dipswitches. The various modes are selected by an electronic menu, which prints out each set of choices with the current state underlined, and gives you the option of selecting a different condition or going on to the next. Personally I would rather poke a dipswitch with a biro than have to go through this menu to get to the thing I want to change, but apparently IBM PC users don't much like dipswitches either. The electronic menu is intelligent, though. Once you have selected a set of conditions those are in place whenever you switch the machine on. You can select your favourite font from the 6 LQ and 2 draft, and that will always be selected on power-up, unlike the 9-pin which always powers up in draft mode. Your desired top-of-form position is also stored, so you don't have to adjust the paper every time you switch on, and you can store different positions for tractor feed and single sheet paper. Like the Swift 9, the 200C has paper parking to make switching from continuous to single sheet easy. If you want to make a temporary change to the top-of-form, the machine will work on that till you switch off, when it will revert to your chosen default setting. If you want to change to the new one permanently, a single button-press will store it as the new default.

Slider selection panels on the machine let you make temporary changes to font, pitch, colour, condensed, proportional and so on, or lock the font so that software instructions cannot change it.

There are useful printing

modes: copy (makes the print head strike harder if using multi-part forms); envelope (doesn't go off line when the bottom of the envelope passes over the paper-out detector, so you can print the whole address); quarter (prints four pages of text in quarter size on one sheet of A4. Fig.2 shows one of four pages I printed from *DTP Pack* in this way, it is extraordinary that the detail remains so clear in these quarter size printouts. They are useful for an economical preview of your work, and if you use double height and width printing, so that a decent size type is produced, can be used to produce small leaflets, programmes, menus etc.

The printer has Epson, IBM and NEC emulation, plus some extra commands which are unique to Citizen. It comes with tractor or single sheet feeding, and



Fig.2.

Centronics interface. Serial interface and an automatic sheet feeder are available as optional extras. Also provided was a disc for setting up Windows on a PC to drive it. Colour or ordinary black ribbons may be used, or a film ribbon is available if you want super high quality for preparing printing masters, for instance. It can also print in black or colour on film for overhead projectors.

The SAM and Spectrum user cannot simply plug in a 24-pin printer and sail away, knowing that most of your software will work normally with it, as you can with a 9-pin. Although the codes for 1/8 and 1/6 line spacing are the same, and so any program which uses those will work normally, the smaller linefeeds are different. 24-pin uses n/60 and n/180, against the 9-pin's n/72 and n/216. Any existing software which uses those codes, (ESC A and ESC 3) is going to give trouble. The printouts will be deeper, the proportions different, and anything which fitted neatly on an A4 page will now be going onto a second page.

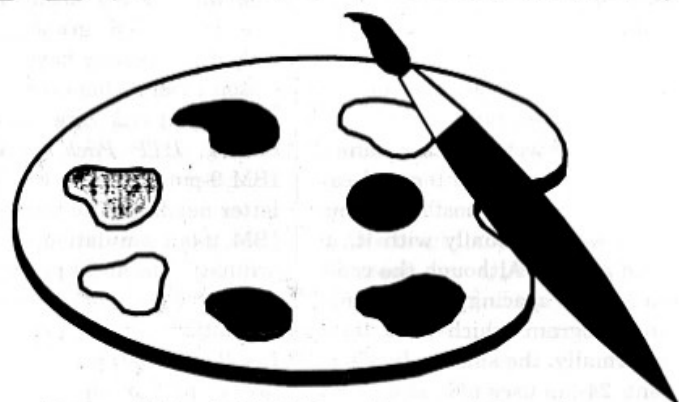
Some programs are easily put right. *The Secretary*, for instance, uses 12/72 to get its 1/6 spacing. So all you need to do is alter the 12 to 10 in every appearance of ESC A (27,65,12 becomes 27,65,10, and the linespace of 12 on the print menu changes to 10), because 10/60 is also 1/6. I use a 9 linespace with *Elite* printing on the Swift 9, to give a 1/8 linefeed. You cannot get an exact 1/8 with *The Secretary* in 24-pin, but a linespace of 7 is near enough. *Outwrite* tells you how to produce your own printer driver in the manual - simply follow the instructions and substitute the 24-pin codes.

You have more trouble with programs like *DTP Pack*, because the printouts are distorted vertically, and no longer fit the

page. The Swift 200, however, has 9-pin graphics emulation available in IBM mode. It is called Alternate Graphics Mode, and confusingly it has to be set to OFF to select it on the electronic menu. The information about which way you like your IBM graphics is stored, so although I usually have the printer set to Epson mode, whenever I switch to IBM, 9-pin graphics are now the default setting. *DTP Pack* works perfectly in IBM 9-pin graphics. Fig. 3 shows a *DTP* letter heading. The top copy is printed in IBM 9-pin emulation, the lower one in ordinary Epson 24-pin graphics. If your printer does not have 9-pin graphics emulation, you can get quite satisfactory results with *DTP Pack* by confining your layout to the top threequarters of the page. (Don't put anything in the bottom two rows of rectangles on the grid which is overlaid by key X in *Typeliner*!). Some illustrations may have to be stretched horizontally to compensate for the vertical distortion in the printing - you need to draw an ellipse in your original to print a circle - but the results are still pretty good.

Style Writer is not so good. It too produces a taller printout in Epson mode, but it does not respond well to the IBM emulation. It prints illustrations in perfect proportions, but it prints them all on top of one another at the start of the line, instead of side-by-side across the page. I suspect that it may use some sort of horizontal tab settings to move across the page between items, and the tab commands are different in Epson and IBM emulation. One of these days I must disassemble the *Style Writer* print routine, and see what can be done, but in the meantime, I either use the 'fatten the illustrations and keep to the top threequarters of the page' method, or

SAMPaint



The ADVANCED Art Package For The SAM Coupé

"excellent... very impressive... brilliant... the best... superb... astonished... quality... real professionalism..." Carol Brooksbank, *FORMAT* February 1994.

We could spend page upon page quoting from Carol's review or listing the features of SAMPaint.

But the fact is, SAMPaint sells itself. It has every SAM owner talking about it, it even has a lot of 16-bit owners jealous! And who can blame them when we've implemented almost all the features from their art packages and more...! If you still need convincing, get in touch and we'll send you a list of the main features.

"No other art package can be taken seriously after SAMPaint - an artist isn't an artist without it."

R.R.P. £24.99 - INDUG Members Price £22.50



Send payment with order to:-

FRED PUBLISHING 40, Roundyhill, Monifieth, Dundee, DD5 4RZ. Tel 0382 535963

For SAM Coupé
With 512K Memory

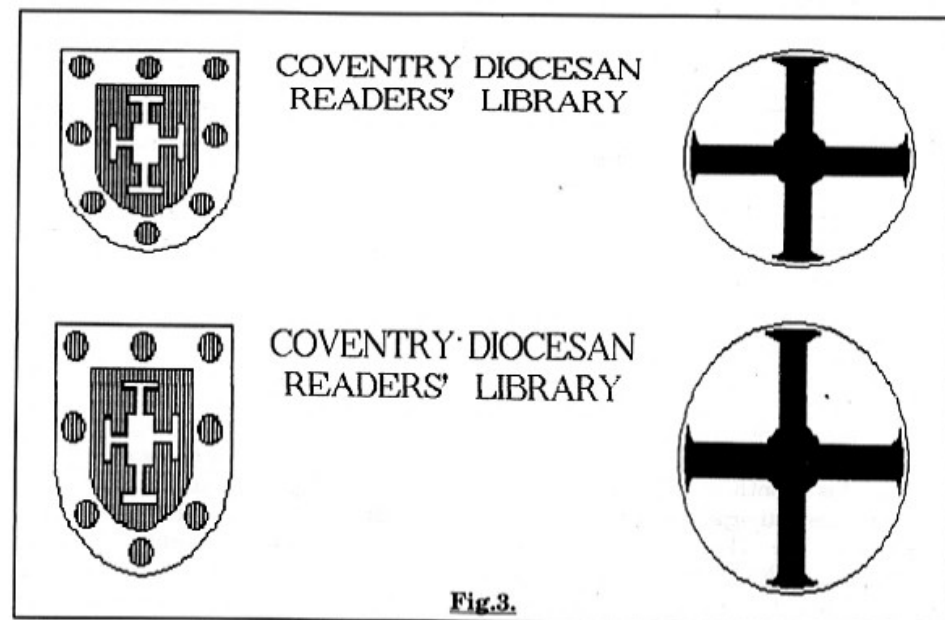


Fig.3.

more likely, use the Swift 9 with *Style Writer*.

SC_DTP has 9-pin and 24-pin modes built in, so there is no trouble with that one, and *SC_Word Pro* works only with 24-pin anyway. *SAMPaint* printout proportions can be restored by changing the graphics mode and, in colour printing, by changing mode and print width. A few experiments will soon show you the settings to use.

So, is 24-pin worth it? Certainly it is. The LQ printing is far superior to anything a 9-pin can produce. But you must be prepared to play about a bit with some of your existing software to get things working, because most of our Spectrum/SAM software has 9-pin drivers. Our software writers really need now, with 24-pin and bubble jet printers becoming much more common, to think in terms of supplying alternative printer drivers to be installed when making your working copy.

I bought the Swift 200C from Kays

mail order catalogue (buy now, pay in December, 38 weeks interest-free credit and 10% of the purchase price back as commission because I am the agent) at £329.99. Anyone with the readies should be able to get it for quite a bit less from one of the mail-order box shifters. A SAM or Spectrum user will, I think, need the full handbook. Citizen are fairly unusual in supplying the full handbook free on request. Some manufacturers put a very high price on what they call the 'technical' handbook, so if you are in the market for a 24-pin, that is one of the things worth checking - will the manual tell you all you need to know to adapt your software, and if not, is getting a fuller one going to bump up the cost of your machine?

If you want good quality, a bubble jet will give you that, but although there are colour bubble-jets around, if your bank balance is anything like mine, affordable good quality plus colour means 24-pin. I can recommend the Citizen Swift 200C.

The HELP PAGE

Edited By:- Ray Bray.

Another month has gone by and as I sit down to compile the Help Page I am still deafened by the hammering and drilling going on around me. I just wonder how much more brick dust the trusty printer can stand before it seizes up as it seems to get into everywhere, no matter how well things are covered up.

First this month a letter from Mick Hopper of Scunthorpe referring to July's edition of the Help Page and the program 'M3 UNLOCK'. You may recall that we said we had not been able to contact the person who used to market this program. Mick knows this person and has offered to contact him to see whether the program is still available. As Mick is a SAM user it is good to know that there are some readers who take an interest in all of the systems covered by **FORMAT**. Thanks for your offer Mick.

Still dealing with the +3, we have a query from Bert Seymour of Scarborough who wishes to know how to transfer *Tasword* +3 files to SAM. Mike says that TW+3 files can be converted to *Tasword* 2 files and also to *Wordmaster* files, and also knows that TW2 files can be transferred to SAM but is not sure whether WM files (+3 format) can be, although they are virtually the same as TW2 files. There is a utility 'T3TO2' which will change TW+3 files to TW2 files. It is available from:-

**Chezron Software,
34 Saltersgate Drive,
Birstall,
LEICESTER,
LE4 3FF.**

Mike states that he has no experience in using this program but understands that it is quite successful although a bit slow. The conversion to *Wordmaster* files can be carried out using the program 'TCON' which is on the *Wordmaster* disc (now available only from **FORMAT**). He has transferred +3 files using this utility and it is fairly easy to use and very quick. On the SAM side of things, I have used the IMPORT facility on *The Secretary* to transfer *Tasword* 2 files from PLUS D discs and have also used it to read *Tasword* +3 files I have transferred from tape.

Our next question concerns the use of the box drawing facility of *The Secretary*. Paul East of Farnborough, Hants, is having a problem in getting his Cannon BJ10 printer to print boxes with continuous vertical lines, they appear as broken lines. You don't say which mode you are using on the printer Paul, but I assume it is the Epson emulation (LQ) mode. The trouble here lies in the different standards used for line spacing. Although the basic printer control codes for line spacing used by the BJ10 and *The Secretary* are the same, *The Secretary* assumes that the spacing is defined in n/72 of an inch whereas the BJ10 uses n/60 of an inch. However, the answer is quite simple. All you need to do is to reset the line spacing from 12 to 10 when you set up the parameters for printing the document using EDIT/PRINT.

The subject of monitors has arisen quite a lot recently and is threatening to

replace printers as a main source of concern. Aubry Greenslade of Little Baddow Chelmsford wishes to replace his faulty monitor and finds that the popular Philips CM8833 is no longer available. All the other monitors he has been offered all require separate horizontal and vertical sync inputs whereas the SAM has only a composite sync output. I don't know of any monitor in current production which will work with SAM but I would like to hear from anyone who does.

Most readers who have written to me on the subject of monitors have been using the Amstrad CTM640 or CTM664 colour monitors which they have obtained at sales or through the small ads. I understand that Bull Electronics of Hove had a supply of these last year so it might be worth trying them. Apart from this I can only suggest that you purchase a SCART equipped TV which will give as good a performance as a monitor, but check that the SCART pin layout is the same as listed in the SAM handbook otherwise a lead will have to be specially made, also there might be other compatibility problems. I have been using a 14" Sony KV-M1410U TV for the past two years with excellent results. This is not only compatible with the SAM SCART lead and is in a monitor style case, but it also allows me to watch the sports programs whenever I want to, which is something you can't do with a monitor!

This leads nicely into the next problem, which concerns the compatibility of the Mitsubishi TV with the SAM. J. Stewart of West Plein Stirlingshire has a new Mitsubishi TV with a SCART socket which, when connected to SAM via the standard lead, only produces a dark unusable picture unless the brightness is set to maximum, and even then there are a lot of light and

dark areas on the screen. He has tried disconnecting the link between pins 16 and 20 but although this produces a picture of normal brightness, it then rolls both horizontally and vertically. The pin layout on the TV is as follows:-

- | | |
|--------------------|---------------------|
| 1. Audio out | 11. Green out |
| 2. Audio in | 12. Not connected |
| 3. Audio out | 13. Red earth |
| 4. Audio earth | 14. Blanking earth |
| 5. Blue earth | 15. Red in |
| 6. Audio in | 16. RGB blanking |
| 7. Blue in | 17. Video out earth |
| 8. Function switch | 18. Video in earth |
| 9. Green earth | 19. Video out |
| 10. Not connected | 20. Video in |
| | 21. Socket earth |

Looking at the pin connections which are used, they are essentially the same as for a standard SAM lead so I am at a loss to suggest what else to try. One thing that I do note is that there is a separate video-in earth pin which does not appear on the SAM diagram of the TV SCART socket. The video-in pin is normally cross-connected to the CSYNC signal and in the absence of a video-in earth pin, I assume the video-in circuit draws it's earth from CSYNC earth. It seems possible that in your TV the video-in circuitry might require it's own earth to function correctly, and you need to connect pin 17 of SAM (Comp. Video Earth) to pin 18 of your TV.

Bob Bates had a similar problem with a Samsung TV, which also has a non-standard SCART pin layout, and he resolved it by buying a SCART lead from the shop which supplied the TV. I have been in contact with Bob and he has promised try and let me know what connections are made on the lead he is using. That is all for this month, a very

short offering, so please keep sending in your problems/answers to the following addresses:-

Anything SAM or General Purpose:-

Ray Bray (Format Help Page),
Spring Cottage,
Bourne Close,
Porton,
Salisbury,
Wilts, SP4 OLL.

Anything +3, CP/M:-

Mike Atkins (Format Help Page),
70, Rudgwick Drive,
Bury,
Lancashire. BL8 1YE.

Please remember that if you want any discs/printouts returned then you must include a stamped addressed envelope.

By the way, we are still looking for more people to join the Help Page team. Drop me a line if you have any specialist knowledge you feel may of help to others.

Continued From Page 14.

```
180 LET L$="V9 (O4D#fa#CgabgO3AD
#FGbD#FaEgb#FaDGBA#CEA#CEA#
CO4D#fa#CgabgO3AD#FGbD#FaEg
b#FaDEg#faDgaDeD)"
190 LET M$="V1303 (5CE3DCb5C3EDC
5b)"
200 LET N$="V11 (5C$E3DC$b5C3$ED
C5$b)O2 (3C&8&3&5$a7$b3&)"
210 LET O$="UX2W004N9&&&&3gabDg
abDgabDgabD (aAaAaAaA) *4"
220 LET P$="UX2W002 (dDDd1DDDD3d
D) *16"
230 LET Q$="UX4W0 (7ab6C5D3E)V13
N7ccccccO2 (3C&8&3&5$a7$b3&
)"
500 LET A$=D$+E$+F$+G$+H$+I$+D$
+E$+F$+"O3N9D"
510 LET B$=J$+K$+L$+M$+N$+J$+K$
+L$+"O2N9D"
520 LET C$=O$+P$+Q$+O$+P$+"V130
2N9d"
1000 LET P=FN P(A$,B$,C$,"","T3"
)
1010 STOP
9900 CLEAR 49150
9910 LOAD d1"music_code"CODE 491
51
9920 RUN
9999 SAVE d1"Demo2" LINE 9900
```

BASICally Speaking...

Part 9.

Right, last month we covered UDGs, so to continue a graphics theme, this month we are going to look at colour. You may remember in part 5 I explained INK, PAPER, BORDER and CLS, so for a quick recap:

You have a palette of eight colours, as listed below:-

- 0 Black
- 1 Blue
- 2 Red
- 3 Magenta
- 4 Green
- 5 Cyan
- 6 Yellow
- 7 White

(Remember that when I refer to the INK command, I mean PEN on the SAM) You set the colour of the letters that you print using the INK command, followed by the colour of your choice. Similarly, the colour of the background is set with PAPER, and the border around the edge of the screen is set using the BORDER command. The settings for PAPER and INK are only for letters which are printed after the commands. To set the whole screen to a particular paper you must set the PAPER number before you CLS. Try this as a demonstration.

```
10 PAPER 2
20 BORDER 2
30 CLS
40 PAPER 6
50 INK 1
60 PRINT AT 10,5;"Only this bi
t is yellow"
```

You actually have fifteen colours if you

By:- David Finch.

count the BRIGHT versions (BRIGHT black is still black so there are not sixteen colours as some would think). For the SAM the bright colours are obtained by using colours numbered 8 to 15 (8 plus the corresponding number). For example bright red is colour 10. Spectrum users try this-

```
10 BRIGHT 0
20 PAPER 0
30 BORDER 0
40 CLS
50 FOR i=0 TO 7
60 PAPER i
70 INK (0 AND i>3)+(7 AND i<4)
80 PRINT 'i;" normal. "; BRIGH
T 1;i;" bright. "
90 NEXT i
```

Although the program works for SAM (SAM can also use the BRIGHT command), you can make direct use of the colours 8 to 15 instead. SAM users could change line 80 to:-

```
80 PRINT 'i;" normal; PAPER i
+8 ;i+8;" bright. "
```

Hopefully you should understand how line 70 works.

SAM users have more colours than a Dulux sample card, 128 in fact. You could imagine a painting palette with 16 blotches of paint on it (numbered 0 to 15). When you ran the program above you saw all sixteen default colours. However, if you fancy doing a Neptune Blue program, you can replace any of the blotches of paint with another colour. If you look at page 66 of your SAM User Guide you will find that Neptune Blue is



W.N.RICHARDSON & CO

(EEC)

QL & SPECTRUM PRICES REDUCED

QL £85 SPECTRUM +2 & +2A £70 SP+3 £80

* KEYBOARD MEMBRANES NOW AVAILABLE *
FOR SPECTRUM+ AND 128 £12 EACH.

* MICRODRIVE EXPANSION KIT *
Includes microdrive & interface 1, booklet, introduction cartridge,
flex connector & wallet of 4 cartridges £59.95
As above with extra microdrive £69.95
NEW MICRODRIVES £24.95 - 2 for £40 (with connector)

* SPECTRUM POWER SUPPLIES *
SPECTRUM PLUS AND PLUS 2 £9.99
BLACK PLUS 2 AND PLUS 3 £12.25
(QTY DISCOUNTS AVAILABLE)

* MICRODRIVE CARTRIDGES *
4 new cartridges in wallet £10.00
20 in plastic box with separators £50.00
8 new (program cartridges for reformatting) in wallets £15.00

* UNIVERSAL 3.5" DISC DRIVE FOR MICROS *
1Mb and 2Mb 3.5" cased, complete with built-in PSU, mains switch &
13amp plug, EXTERNAL dip switches adapt drive for Spectrum, QL,
PC, Atari, Amiga etc. Comes with full instruction book, and free
DS/DD disc. (DS/HD with 2Mb) Price includes free lead.
(Spectrum & QL need I/Face) - Disc Drive 1Mb £69 2Mb £89
Additional leads - for above £12
Uncased 3.5" Disc Drives - low profile 1Mb £29 2Mb £36

Add postage £8. Disc Drives £9
Outside UK add £15. Other items £5. C.W.O. or
Visa/Access
ALL OFFERS SUBJECT TO AVAILABILITY
Spectrum may be reconditioned

Orders to:-
6, Ravensmead, Chiltern Hill,
Chalfont St. Peter, Bucks, SL9 0NB.
Telephone/Fax: 0494 871319

colour 93. The obvious thing to do would be to use PAPER 93, but we can only have access to 16 at a time. Instead we must use the PALETTE command. Suppose we want our Neptune Blue paint to be in the palette space numbered 2. This is Brick Red when you switch on, so the Brick Red is washed away and a fresh tube of Neptune Blue is squeezed into the space. Now when we use PEN, PAPER or BORDER with colour 2, we will get Neptune Blue instead of dark red. Try adding the following line to the previous program:-

```
5 PALETTE 2,93
```

The first number is the PALETTE space that you want to squeeze your tube into, and the second number is the number for the colour. If you change it to the following:-

```
5 PALETTE 2,93,70
```

The colour will alternate (or "flash") between Neptune Blue and Apple Green. You can determine the rate at which the colours will alternate by using POKE SVAR 8,n where n is a number from 1 to 255. 1 is so fast that it is more of a flicker, and 255 changes about once every five seconds.

If Spectrum users have the urge to flash they should use the FLASH command. FLASH 1 switches it on, and FLASH 0 switches it off, just like BRIGHT. Unlike the SAM, this FLASH can only alternate between the INK and PAPER colours for that particular character cell. SAM users can use FLASH only in modes 1 and 2. We will come to modes later.

Going back to SAM's palette: If you have written or drawn something on the screen using a certain palette, if you change the paint in the same palette the

paint already on the screen will change colour also. This can be useful. Try this:-

```
10 PAPER 0
20 BORDER 0
30 CLS
40 PAPER 4
50 PRINT AT 9,10;" " (8
   spaces)
60 PRINT AT 10,10;" On/Off "
70 PRINT AT 11,10;" " (
   8 spaces)
80 DO
90 PALETTE 4,4
100 GET A$
110 PALETTE 4,2
120 GET A$
130 LOOP
```

You will need to press ESC to exit this program. As you see, the colour of the background changes whenever you press a key, yet the information wasn't reprinted (lines 80 to 130 simply change the palette whenever a key is pressed). This means that if you wanted more than 16 colours on the screen at once you cannot draw some, then change the palette and draw more. However, you can change the palette so that above a horizontal level it has a certain value, and a different value below it. PALETTE n,c LINE z changes palette n to colour c below line z only (where z is a y coordinate). Try this:-

```
10 CLS #
20 LET a=90,s=90
30 DO
40 palline a
50 change
60 LOOP
70 DEF PROC palline p
80 PALETTE 0 LINE s
90 PALETTE 0,62 LINE p
100 LET s=p
110 END PROC
120 DEF PROC change
130 GET a$
140 IF a$="q" THEN LET a=a+5*(a
   <190)
150 IF a$="a" THEN LET a=a-5*(a
   >0)
160 END PROC
```

As you see, the black palette of the paper and border becomes "Tuna" part way down the screen (This level is controlled by keys Q and A). If you press escape and bring up the list again, you will see the program text over the black and pink. As far as SAM is concerned the screen is PAPER 0 all the way down. The palette for colour 0 changes part way down. Line 80 cancels the previous setting (variable s holds the level which it was at). If line 80 didn't exist, line 90 would set many palette changes, yet only the highest would be observed since any below would be changing a Tuna palette to Tuna (ie no change).

I think that is a good place to stop for this month. May I apologise to Spectrum owners for the amount of SAM only bits I've just covered.

See you next month.

FORMAT

Presents The New DX1 DISC and PRINTER INTERFACE for the 48K, 128K, +2 and +2a Spectrum.

Based on the tried and tested PLUS D the DX1 comes with the famous UNI-DOS disc operating system built-in. Allows for 1 or 2 drives (3½" or 5¼") and most parallel printers to be attached to your Spectrum. R.R.P. £59.95

INDUG Price only £49.95

State on order if you want the special +2a version.

ALSO AVAILABLE

We can supply a high quality 3½" disc drive, produced for us by Blue Alpha Electronics, for just £59.95 if ordered at the same time as a DX1

UK customers add £2 for DX1 and £3.50 for Drives. Overseas customers write for quote on insured shipping. Please quote INDUG membership number.

Send cheque (payable to FORMAT) to:-

**Format Publications (DX1),
34, Bourton Rd, Gloucester, GL4 0LE.**

Blue Alpha Electronics

EXPERT REPAIRS FOR SPECTRUM & SAM

| | |
|---|-----|
| SAM (excluding drives) | £35 |
| SAM Power Supply | £20 |
| Most SAM Interfaces | £20 |
| Spectrums (excluding tape deck or +3 disc drive) | £30 |
| PLUS D | £20 |

Other Items not listed - please phone with details of fault and in many cases we can give an instant quote. All our repairs carry a **Full 3 Months Guarantee** against the same fault recurring. All prices include UK return postage by **Insured Carrier** - overseas customers please write for details on cost of postage and insurance.

Please note: We will quote for the repair of disc drives only after a **FREE** inspection - ring us for details

NEW BLUE ALPHA *NEW* 3½" DISC DRIVES

Top quality, metal cased 3½" 80 track DS/DD drives with built-in power supply and all necessary leads for connecting to DISCiPLE, PLUS D, DX1, SAM (via External Drive Interface) or BBC"B"

ONLY £59.95 + £3.50 p&p

ALSO AVAILABLE

We can make and supply all types of cables - custom made to your specification. Just send us a Stamped Addressed Envelope with details of cable required (pin-outs, length, etc) and we will send you a quotation.

Send cheque/postal order (Pounds Sterling Only) payable to:- **Blue Alpha Electronics.**

REMEMBER to pack things well, we will use your packing for return

**Blue Alpha Electronics,
18, Maesybont, Glannanan,
Ammanford, Dyfed,
SA18 2AY.
Tel: 0860 157618.**

SC_WORD pro £29.99

At last a professional word-processor that takes a leap forward in printer quality output, the text you are reading now is an actual printout from the Sam Coupe.

SC_WORD pro does not use Lprint as used on other word-processors to output text, instead it takes control of up to 14 million dot positions available on a printed page, each individual dot can be set with ink or not printed out at all.

The advantage of this system is you are not restricted to the size and number of fonts your printer uses with Lprint.

With special software for 24 pin dot matrix printers to double printer resolution, and the support of Ink/Bubble Jet printers, you will find no other software on the Sam to beat this text quality.

SC_WORD pro uses it's own built in fonts which are crisp, sharp and non jagged, available in 11 sizes, proportional space letters and words, various justification, in fact the same quality you would get from more expensive word-processors on the Amiga and PC Computers.

No restrictive 64 column text on A4 paper, text can be placed at any position on all types of size of paper.

No restrictive 32K edit area for your text, a generous 128K is provided, enough to hold up to 32 pages.

The program is so easy to use, there are no control codes to fiddle around with, mouse supported as well as keys, ideal for beginners.

Borders, graphics, grey shade colour available in upgrade version FREE of charge later in the year.

SYSTEM REQUIREMENTS:-

512K SAM, with a copy of MASTERDOS. (Extra £12 for a copy)

24 Pin or 360 dpi Ink/Bubble Jet Printer.

1MB Ram and Mouse recommended, but not essential.

Other Sam Coupe Utility software :-

| | | |
|--------------------------|---------------|---|
| SC_ASSEMBLER | £12.50 | Machine code editor, Allows you to type in machine code programs. |
| SC_MONITOR pro | £15.00 | Debug machine code programs, TurboMON included by Simon Owen. |
| SC_FILER | £12.50 | Powerful user definable 99% machine code Filing database program. |
| SC_DTP | £25.00 | Desk Top publisher for arranging text and graphics for Newsletters etc. |
| SC_DISC PROTECTOR | £15.00 | Interface to solder, protects discs in drives from corruptions. |

For more information see last months issue of Format, or for a detailed Catalogue, Demos & Screen shots, Print Samples and other products, please sent a blank Formatted disc and three 2nd class stamps.

BUY NOW PAY LATER Still the most popular way to pay for software, just phone the below number, quote the items you would like to order, software sent out first thing next morning with invoice, have up to one month to pay.

STEVES SOFTWARE
7 NARROW CLOSE, HISTON, CAMBRIDGE, CB4 4XX.
TEL 0223 235150 From 6pm-9pm MON-SAT.

ANALOGUE and DIGITAL STATES

By:- David Spark.

Each month **FORMAT** publishes articles for serious Spectrum & SAM users, but it seems rare that articles are published on general computing principles. Instead of commanding the editor to produce such an article out of thin air I decided it would be more fun to send an article in. This has been written to inform the readers on the basics of Analogue and Digital states and how they are used in computing. I also hope this will save a few A-level and BTEC students from being fined at the local library for handing in overdue I.T. books.

Analogue and Digital States

Two states that can be found on a computer system can be classed as either Analogue or Digital, depending on their characteristics.

Most measurements appear in a analogy form. Analogy system means that all values are possible and they increase smoothly. This also includes the infinite values between the two states.

A common example of this is in a analogue clock. The hands move around the face and as they move from one minute to the next, the hands cover all the distance between the two.

Other examples of an analogue state system includes: temperature, pressure, time and distance.

Digital has only a certain number of values that are possible and the numbers 'jump' from one to another. e.g. 1, 2, 3, 4, 5, etc...

Digital clocks have figures that suddenly move from one number to another, the numbers in between aren't covered. The counting system used in a digital clock works using a A.C. voltage with a velocity of 60Hz, this is converted into a 60Hz pulse and finally scaled down to a 1Hz pulse. The pulses are counted from 0-59 before going back to zero. However these pulses don't include any of the values between the two figures, this is the same for all quantities being used on a digital system regardless of whether they're minutes, seconds or milliseconds.

Other digital states can be found on: on/off switches, traffic lights and other devices that only use selected numbers.

Transmitting Data

An analogue system uses the value of the voltage as a way of transmitting messages. Different levels of voltage will give a different message to the decoder. The reason that computers don't use analogue states is due to the internal voltages found inside the computer, these will distort the correct voltage, giving it a different value and so a different meaning.

Digital signals are sent in pulses of 0V or 5V. As with the analogue system messages are sent using a voltage, but as there are only two possible voltages it isn't the level of voltage sent but what sequence the voltages are sent in. Fig.1 shows an example of a 8 bit sequence.

| VOLTAGE | SWITCH | BINARY |
|---------|--------|--------|
| 5V | ON | 1 |
| 5V | ON | 1 |
| 0V | OFF | 0 |
| 5V | ON | 1 |
| 0V | OFF | 0 |
| 5V | ON | 1 |
| 5V | ON | 1 |
| 0V | OFF | 1 |

Fig1.

In the first column is the value of the voltage being sent, the second column shows which of the two states they represent and the final column gives the binary command that the computer will understand. The binary being sent will be an instruction for the computer to carry out and the last byte of binary may be a check digit to ensure that the decoded command is correct.

Internal voltage cannot effect a digital signal in the same way as the analogue is affected, this is because the voltages are sorted into the values closets to either 0V or 5V, 0.6V would become 0V, 5.35V would become 5V. This offers a reliable way of ensuring correct values.

Analogue and Digital in computer systems

Often sensors are used in computers to input values of heat, light, pressure, sound, etc. The problem here is that the signals will be in analogue form and so the computer can't read them. The solution is to use an 'Analogue to Digital Converter' (ADC), the characteristics of which are seen in fig.2.

The sensors analogue signals would be inputted and converted into digital output usually in the form of binary code.

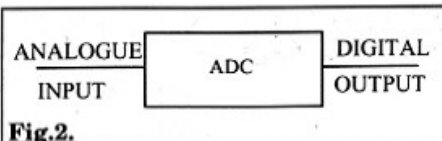


Fig.2.

See fig.3 below for a more detailed diagram showing the input side of the system.

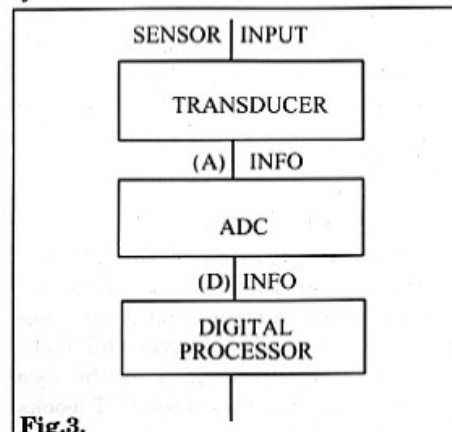


Fig.3.

The analogue sensor signals are sent to the transducer, where they are converted into electrical signals, these signals are still in their analogue form (A) are passed to the ADC. The ADC uses a technique called 'PULSE CODE MODULATION' (PCM) to convert the signals into a digital form (D). The digital information is then passed to the processor where a pre-written list of instructions will tell the computer how to deal with the data.

The PCM system mentioned above samples the analogue information at regular intervals of time and converts what it sees into binary code. This gives a more accurate representation of the original signal.

However, the accuracy of the digital version depends on the sample rate. The faster the sample rate the higher the accuracy achieved by the digital signal.

This can be clearly seen if you look at the example given below in fig.4.

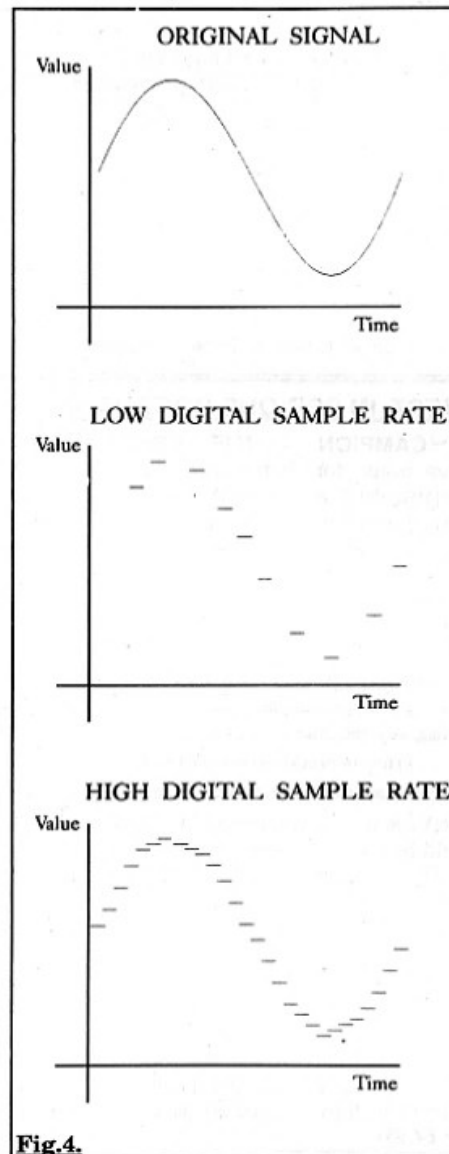


Fig.4.

The aim when producing a digital signal is to make it look as much like the original analogue signal as possible.

SMALL ADS

FOR SALE Two Spectrum +2a computers, the keyboard membrane has gone on one. Two joy-sticks, a Multiface 3 and piles of games from Lords of Midnight through to Street Fighter 2. Any offers? Will Split. Ring Wil on 051 928 2122 Monday to Thursday evenings.

256K SAM One drive, messenger, GamesMaster. Old ROM. £60 o.n.o. Write to D.J.MacGregor, 9 Birch Close, Charlton Kings, Cheltenham, Glos, GL53 8PJ.

FOR SALE 2 Spectrum +2s, PLUS D system, over 500 games, Sinclair Printer, books, mags, all leads etc. can be seen working. Buyer must collect. £200 o.n.o. Tel Alan Price on Swindon (0793) 531896.

WANTED. Teacher requires ULA to repair Interface 1, also have 10 year collection of Spectrum software and hardware for sale. Send SAE to Mr B.Smith, 61 Coniston Close, Raynes Park, London, SW20 9NJ.

YOUR ADVERTS

Selling, Buying, Pen Friends, etc.

Any **PRIVATE** advert, subject to acceptance, will be printed **FREE** in the next available issue. Any software sold **MUST** be original. The publishers will not be held, in any way, responsible for the adverts in this column.

Due to shortage of space, if your advert remains unpublished after two months then please send it in again. Trade advertisers contact the publisher for rates.



SAM GAMES AVAILABLE FROM REVELATION

LEGEND OF ESHAN

A game like none seen before on SAM.

This graphic game of strategy and adventure takes you into a vast world of demons and war-lords. As Eshan you must raise an army to save the beautiful land of Avinell from the terror of Barquin the Witchking and his hordes. With your friends and followers you must rescue Avorell the Noble and restore him to his palace. This is *not* an arcade game, this is *not* an adventure, this is something *very special*.

Legend Of Eshan works with keyboard or joy-stick and is also fully Mouse-compatible. Comes complete with comprehensive instructions and a map of the lands of Avinell.

£14.95 (£12.95 to INDUG members)

WOP GAMMA

© A Super-Fast 'Boulder Dash' game with *FAST Full Screen Scrolling* - 99 Levels all with super graphics and mega music.

£9-95 (£8-95 to INDUG members)

PRINCE OF PERSIA

The classic game of sword-fighting and adventure that has you racing to save the beautiful princess from her fate at the hands of the evil Vizier. Superb animation, hundreds of rooms to explore, a real challenge for any games player. Original priced at £14.95 now re-released by popular demand and at a price that no-one can miss.

£9-95 (£8-95 to INDUG members)

REVELATION FOR THE VERY BEST IN SERIOUS SOFTWARE

➤ **THE SECRETARY** - The most advanced word-processor for SAM, powerful, versatile and easy to use. *NEW Version 1.5 Available Now* - The BEST just got better £14.95 (£12.95)

• Existing registered users can upgrade by sending their original disc, together with an SAE for its return, to: *Secretary Updates*, C/o Format Publications, 34 Bourton Road, Gloucester, GL4 0LE. Please pack well, we cannot be responsible for damaged discs.

➤ **COMET Z80 ASSEMBLER** - The professional SAM assembler - a must for anyone starting with machine code - *SPECIAL OFFER PRICE* until 31/8/94 £19.95 [normal price £29.95]

➤ **CAMPION - THE SPREADSHEET**. versions for both SAM and Spectrum (DISCIPLE or PLUS D). Featuring over 70 built-in functions and ready made formula, this program is easy to use and yet powerful enough to rival many expensive PC programs. A very comprehensive manual (over 80 pages, with lots of examples) *Available now at £29-95 (£24.95)* - Works best with MasterDOS.

• State which computer version (SAM or Spec) and disc size required (3½" or 5¼").

Prices in brackets() are for INDUG members.

DRIVER

The Graphical User Interface for SAM

Comes complete with many built-in utilities and ready to run applications. Full manual and a disc-based tutorial. DRiVER gives you the ease of use only found on big office computers before. So easy to use yet so powerful. *Fantastic Value £29.95* (INDUG members £24.95)

Special Offer - Buy DRiVER together with an Official West Coast Computer's SAM Mouse and *SAVE £5*. Our price ONLY £69.95 incl UK p&p. (INDUG members £64.95)

NEW - DRIVER EXTRAS. A set of extra applications to add even more features to DRIVER. Incl: Digital Clock/Alarm (needs SAMBUS), Calender, Cardfile (simple indexed data storage), Art-Grabber (cut & paste screen\$), Paintbrush (fully fledged art package - worth the money on just for this). *Only £5.95* (INDUG price £4.95)

• All prices include UK postage and packing (Europe please add £1, other overseas please add £2).

• Payment by UK cheque (made payable to Revelation Software), PO or cash. Sorry but we can't accept orders by Euro-cheque or Giro.

• Please Quote INDUG membership number clearly on order if claiming discount.

• Send orders to:-

**Revelation
Software**

Revelation Software, P.O.Box 114, Exeter, Devon, EX4 1YY.

MEMO for DRIVER

By:- Robin Biesbroek.

This is 'MEMO': a data base in which you can store people's addresses, telephone numbers and zip-codes. It runs under DRiVER. In fact, you must load it into DRiVER, so it uses DRIVER's windows. To run this program, you need a blank disc. This disc doesn't have to be formatted. Now, type in program 1 and RUN it. It will format the disc, save this program plus a code-file and will make lots of sub-directories (this will take a while). We will call this disc the 'memo' disc.

So, how do we run this program? It's very simple: load DRiVER. If DRiVER automatically makes a directory of the DRiVER-disc, close the 'DRiVER' window (to eject it) and eject the disc. Now, put the 'memo' disc into drive one and click to the disc-icon to make a directory of the 'memo' disc. If you don't see an icon titled 'Memo.bas' you must go to the 'preferences' menu (on top of the screen) and click to the Basic line so that the program will show Basic programs. Now, click to the 'Memo.bas' icon. This will load the Basic program and will return to DRIVER. You will see that we now have small icons and different colours. If you want to take a look at the entries, click to the 'Entries' icon. A window appears, containing 19 entries, called zz1 to zz19. To enter a name, click the zz1 (or zz13, whatever) icon and click on the highlighted name (yes, we are actually renaming files). Now you can change 'zz1' into a name of your friend.

Remember that the length of this name can only be 10 characters long. To enter his address, double-click the icon and you will see that a new window appears, with three entries: Add, Zip and Tel. You can change these into your friend's address, zip-code and telephone-number the same way you changed the name: by clicking the icon and then clicking on the name.

You can enter up to 19 different names with each name holding its address, zip-code and tel. number. Why only 19? Well, I started with a disc, formatted with **FORMAT "d1",39** so it could contain 778 files. With one Basic program, one code-file and the 'Entries' subdirectory, there were 778-3=775 files left for the entries. Each entry has a name, an add, a zip and a tel, so each entry takes four files. So the disc could contain 775 div 4 = 193 entries. However, DRIVER can only cope with 80 files on a disc! This means we can only have (80-3) div 4 = 19 entries. Why?! I don't know! Does anybody have a solution for this?

For all you programmers who want to know how it all works: here's a closer look. In lines 100-120 the disc will be formatted. You can enter your own disc-name. After that, the Basic is saved, as well as a code-file, holding the preferences DATA (130+140). Then, the 'Entries' subdirectory is made and also made the current subdirectory (150). Now, 19 subdirectories are made, called zz1 to zz19 and each subdirectory will

hold three files: Add, Zip and Tel, all one byte long (160-220). Lines 230-270: this is the tricky part. Each subdirectory has its own window with DRIVER. The position and size of that window are stored at bytes 232-235 in the directory entry. The subdirectory 'Entries' is stored at track 0, sector 2 (first half) of the disc. The position of the 'Entries' window is at (95,18) and the size is 64*173 (w*h). Beware that position (0,0) is at the top left of the screen. Line 230 changes the subdirectory 'Entries'. The subdirectories zz1 to zz19 are stored at track 0, sector 2,4,6,etc. (second half).

Lines 240-270 change these subdirectories. The position of the windows for these directories is at (148,30) and the size is 64*48. Lines 1000-1070 contain data for the preferences and in lines 1080-1190 there is a procedure to put these bytes into memory. When the program is loaded from DRIVER, the start-address of DRIVER is calculated (line 10) as well as the start-address of the preferences-data. These data are also loaded. In line 20 the program returns to DRIVER. If you return to Basic again from DRIVER, the memory will be cleared.

OK, here is the listing:-

```

1 RUN 100
9
10 LET base=16384+16384*PEEK
23703,a=base+DPEEK (base+2
6): LOAD "Memo.set"CODE a
20 CALL base: NEW
99
100 INPUT "Name of MEMO-file ?
";a$
110 PRINT "Insert blank disc a
nd press a key.": PAUSE
120 FORMAT "d1:"+a$
130 SAVE "Memo.bas" LINE 10: V
ERIFY "Memo.bas"
140 store 81920,64,1000: SAVE
"Memo.set"CODE 81920,64
150 OPEN CAT "Entries": CAT ="
Entries"
```

```

160 CLS : FOR f=1 TO 19: PRINT
AT 0,0;19-f;" "
170 LET a$="zz"+STR$ f
180 OPEN CAT a$: CAT =a$
190 SAVE "Add"CODE 0,1
200 SAVE "Zip"CODE 0,1
210 SAVE "Tel"CODE 0,1
220 CAT ="^": NEXT f: CAT =/
230 READ AT 1,0,2,81920: POKE
82152,95,18,64,173: WRITE
AT 1,0,2,81920
240 FOR f=0 TO 18: LET a=(f*2+
2) DIV 11,b=(f*2) MOD 10+
2
250 READ AT 1,a,b,81920
260 POKE 82408,148,30,64,48: R
EM 81920+256+232
270 WRITE AT 1,a,b,81920: NEXT
f
999
1000 DATA 15,0,90,127,12,15,25,
0,284
1010 DATA 2,0,1,3,2,1,2,1,12
1020 DATA 0,0,1,1,0,0,0,0,2
1030 DATA 0,0,1,0,1,1,1,0,4
1040 DATA 0,0,255,0,4,59,245,84
,647
1050 DATA 16,56,232,96,24,77,22
5,88,814
1060 DATA 32,72,216,96,40,80,20
8,96,840
1070 DATA 48,88,200,96,56,96,19
2,96,872
1080 DEF PROC store first,numbe
r,q
1090 RESTORE q: FOR n=first TO
first+number-1 STEP 8
1100 LET check=0
1110 FOR b=0 TO 7
1120 READ a
1130 POKE n+b,a
1140 LET check=check+a
1150 NEXT b
1160 READ a
1170 IF check<>a THEN PRINT "ER
ROR IN LINE ";q: STOP
1180 LET q=q+10
1190 NEXT n: END PROC
```

That's it for now. If you've found a way of using more than 19 files, please send it to **FORMAT**. See you!

[Editor's Note: This may not be the most efficient way of making a database, but it does explore some new ideas that I thought readers would be interested in. Let's see what improvements you can make.]



YOUR LETTERS

Dear Editor,

I have just read Wilf Stone's letter in last month's **FORMAT**, and I think I can explain the strange behaviour of his program, Power Graphics.

In the good old days, in version 1 of Speccy, the keyboard worked in a slightly different way. The keyboard is connected to several Z80 ports (see the manual), but only uses bits 0-4 of each port. In issue 1 Speccies, bits 5-7 were always set to zero, so machine code programmers could ignore them. Issue 2 and later Spectrums had bits 5-7 as random values, so many older programs did not work correctly.

If, when Wilf's Speccy was repaired, the ULA was replaced with a later version, this problem may occur.

I would suggest trying the program on the Spectrum emulator from BG Services, as this probably sets b5-b7 to zero.

Yours sincerely, D.J.Sheridan.

Dear Editor,

You asked about monitors with SAM. I use a Philips CM8833 and find this works well.

With regards to the chap that had problems with two discs not working on his friends computer, it may have been worth trying to use a disc formatted on his friends machine.

Yours sincerely, G.Jess.

The CM8833 is not available any more as far as I know, but they may be available on the second-hand market if you look out for them. **Ed.**

Dear Editor,

I was interested to read Carol Burdge's letter about genealogy.

I have written a genealogical database which might just interest her (on SAM). I have also written another program for the Spectrum which simulates change-ringing in campanology. Therefore I would be grateful if you could put me in touch with both these people.

May I suggest that, assuming you received more letters than you publish each month, that you publish a brief list of the subjects covered in the letters which are not published to give readers the opportunity at least to correspond between themselves.

I mention this because, although I have written to you before, about genealogy, because the letter was not published, other readers have therefore not been able to contact me, or vice versa.

Yours sincerely, Peter Wood.

A copy of your letter has been passed on to the two people concerned Peter. If anyone else would like to contact you we will pass on letters.

We keep a file of what we consider 'interesting' letters and it is from that file that we select each month to try and get a balanced content to the *Your Letters* section. Once in a while we do go through and remove letters that are getting a little long in the tooth, but it is possible for a letter to appear several months after it was first written.

May I recommend to readers that if they what to contact other readers regarding a special interest then the best

way is through the Small Ads section. This allows your address and or phone number to be printed. **Ed.**

Dear Editor,

It is with some regret that I received my copy of **FORMAT** last month and read your reply to a certain 'Lord Blackadder'. It once again fuelled the fear that the SAM is slowly being dug into a pit by people, including yourself, who fail to see that the machine is suffering due to a lack of new hardware.

Your understanding that things will come in time is one I find particularly sad as the computer market is one of constant change. Who can afford to sit still in this market environment?

Well it looks like the SAM will try. Perhaps the reason for this idle approach is that the funds for research and development are not available and that you are just hoping that this hardware argument will just blow away given time. If there is a lack of funds then the good ol' SAM public will have to chip in and back the machine up a bit. After all I'd like a hard drive, a digitiser etc., and would be willing to invest in its development. What is also severely lacking is your support and enthusiasm for the hardware designers out there who would like to be part of a hardware project. Whenever I ring David Ledbury I come off the phone at least feeling that there are people interested in the Coupé and that it is worth hanging on to. Believe me the temptations of ditching the SAM for a PC have almost got the better of me on a few occasions when the SAM world has gone into sleep mode. I personally feel, and I know others do, that your organizational skills would be invaluable in organizing the hardware developers out there. What it needs is your enthusiasm, belief in the people willing to develop the machine and if the cash isn't available the willingness to invite members of the SAM public to

contribute to the machines long awaited success. Please at least give it some thought.

Incidentally, I feel that your statement that the writer of the letter which started this debate was childish to use a pseudonym is in itself a childish comment. Does it really matter how people wish to be addressed in the computer world? The music world is full of people who choose to be called something else - as is the art world, and theatre world. Are they all childish as well? After all it's only fun isn't it?

Yours sincerely, Mr Pants.

(Sorry, Alan Hawes)

It is nice to see something that stirs up a bit of controversy once in a while, and yes I can see some of your points Alan but I think you miss one of my points.

SAM, very sadly, has not had the mass sales of machines like the Spectrum or C64. At the moment there are around 12,000 SAMs in the world and around 4,000 of those are in eastern-block countries so they do not affect the UK market (little software is sold to them and even less comes out of their efforts).

Given this, it is most important that the SAM market is not fragmented too much. Let us take a case in point, the 1meg memory expansion. Little software has been written to really exploit it. Why? Because any software company wants to sell as many copies of a program as possible. If a program sells to only 10% of the user base, that gives 800 potential customers, if on the other hand it sells to 80% of 1meg owners then that may only amount to 600 sales. You see my point?

If we can get more software support then SAM's sales will increase - it is one of the simplest rules of the computer market. Then there will be room for new and exciting hardware.

That said, I do not include a hard drive in that category. I'm told the hardware

side is quite simple (although nobody has yet demonstrated working hardware to me) but that writing a DOS is a very big job. I would love a hard drive, I would quite happily put money into such a project. All it needs is for someone to show me working hardware, that could be commercially produced, and I will back it 100%.

As to names, yes I do think it is childish to use childish names. Where is the fun in it? Am I missing out on something? **Ed.**

Dear Editor,

I read with interest the letter from Lord Blackadder and I was pleased that you decided to give it a sensible answer as people like me need all the answers we can get.

As to the matter of enhanced graphics, I was recently in Dixons giving unhelpful suggestions to a relative who was buying a camera when I was asked to go and look at the computers. I was surprised to see teeny little words on the screens that I could actually read, well maybe PCs are expensive and hard to program but the graphics are rather nice so I for one would like a mode 5 with real Hi-Res graphics and would even be prepared to put my money where my mouth is and invest say £25 in the development of such a card, and if only five or ten per cent of INDUG members did the same there would be a healthy sum to get started on.

In reply to Carol Burdge you asked for family tree software for Spectrum that could be converted to SAM, well Tony Reese Computer Services of 94, Coombe Lane, Bristol BS9 2AP, tel 0272 686768 have a Spectrum program called 'Progen' with two main areas, a pedigree chart and a family group sheet.

Finally, what has happened to the hardware design course. I would like to see an analogue to digital converter then the computer would be used as a

multi-meter amongst other things, and wasn't there mention of a hardware development kit?

Yours sincerely, Ken Murray-Taylor.

For most of your answer Ken, please read my reply to the last letter.

The series of hardware articles has dried up at the moment because Adrian Parker is off doing something else. However I am looking for someone to take over the course so if there is anyone out there interested please get in contact. **Ed.**

Dear Editor,

Reading the letters in the June **FORMAT** I felt motivated to reply to Mr B.Jewel's letter about monitors for SAM.

I have struggled with a 14" colour T.V. for a year. The print codes down the left side of the screen were impossible to read when using *The Secretary* W.P. But now I've got a colour monitor and I'm delighted every time I switch on, no more trying to read a fuzzy picture. The trouble is that the only monitor that's compatible with the SAM is also compatible with the Amiga, and there must be millions of them. If you go into W.H.Smiths you'll see at least 6 different magazines for the Amiga, so there's a bit of competition for these monitors. They are about £100 second hand. Then you'll probably need a lead as the pinouts from the SAM are different. According to the 'experts' there are two kinds of monitor, both made by Philips, one is the Commodore 1084 - if it's got ST after it then it has stereo sound facility, if not then it's mono. The other one is the Philips 8833 Mk 1 and Mk 2 either mono or stereo. I was fortunate I bought mine from Dixons, an ex demonstration Commodore 1084 ST for £150.

What can I say about **FORMAT**? An excellent magazine, I look forward to it every month, and to the next rally.

Yours sincerely, Keith Williams.

Dear Editor,

There has been some discussion in recent issues of **FORMAT** on problems in loading discs between the drives on different SAM Coupés. As I had a similar problem with an external drive with the SAM disc interface, I thought my experience would be of help. What happened was that although the directory of drive 2 could be read without problems, trying to load programs was difficult, and threw up error reports, and saving was very erratic and unreliable.

Having MasterDOS, enables the parameters of both drives to be altered, and after some experimenting I found that by changing both the stepping rate for drive 2 and the skew, the problem was solved. These can be checked on your own SAM by entering PRINT PEEK DVAR 4 and PRINT PEEK DVAR 14. In my case I used POKE DVAR 4, 15 and POKE DVAR 14, 254 to effect the changes.

I also find it useful when using the transfer program for Opus Tasword files to SAM to POKE DVAR 3, 15 to slow drive 1 down, to ensure reliable reading of Opus discs.

I trust this is of interest.

Yours sincerely, Frank Harrop.

Thanks Frank, I must admit I've never found that the skew factor made any difference in reading discs but it does sometimes help set up for odd drives. **Ed.**

Dear Editor,

With reference to the enquiry concerning a Nassi/Shniederman diagram. (**FORMAT** Vol 7 No 11 page 27 column 2). I offer the following information.

I believe they are the people responsible for introducing flow-chart symbology. Their actual use in demonstrating the flow of a program can be classed as a Nassi/Shniederman diagram. Further reading can be

obtained from the following:-

Software Engineering - A Practitioners Approach, 3rd Edition, ISN Number 0-07-112779-8, Author Roger S. Pressman, Publishers - McGraw/Hill.

The actual book was called Flow-chart Techniques for structured programming, Nassi, I & Shniederman, B. Sigplan, ACM, August 1973.

I hope the above proves useful.

Yours sincerely, Eric Olyott.

Thanks Eric. **Ed.**

Dear Editor,

I am a new member, (and found my first copy of **FORMAT** waiting for me to come home late Saturday night (9/7/94) and I welcome this chance to state some of the queries that come to mind.

My first question concerns compatibility. Has any work been done by anyone to re-write 48K games that are not compatible with the +2, +3 or SAM, so that they could be, or has anyone written listing or utilities to change the necessary code so one may have one's working favs., on one's upgrade.

Otherwise the situation exists that, although you may upgrade your Speccy for a system that is compact and comes packed with disc drive or tape deck and has more memory, a certain section of your software is redundant, unless you keep an array of Speccies ready for go! If this is the case, then only the 48K (rubber or +) is needed for all software that is not 128k, but then one is hampered for work that requires more memory. I am not a clever programmer and so have to (in the main) depend on those more wise on this subject than I am, so to my mind it is either an array of Speccies, or re-written programs, that would solve this problem.

My second question concerns itself with early games that were great, but had bad user keys, inadequate (non existent, or obscure) joy-stick modes. Has

any work been done to standardize these, to at least both Kempston or Sinclair formats for joy-stick users. (realizing that they don't all work on +2s or +3s or SAM's either). In my work (dustman) and hobby (car-booting) I come across a good many computers (some working, some not!) and much software, I mainly dedicated myself to the Spectrum, repairing, selling or giving them as presents, so I have a range of Speccies up to +3 and SAM Coupé, and a large software library, but some frustration sets in, with having to load one program in one Speccy and one in another, just to have them work, then finding they may have a deformed finger arrangement as a keying-in format, to play the game, and then there is the time and palaver it takes to load some of the latest games in, (if not on disc drive) a factor exaggerated by some software companies, to help kill off the speccy no doubt! Then there is the space it all takes. (wires and that!). It seemed fun once, but not any more, so I'm wondering if any of the good programmers out there could be moved to producing utilities or program listings to help in making incompatible programs compatible, you would have thought that the software companies would have already done all this but no!

I am beginning to wonder if anyone else had these problems, and what did they do about them. I don't hear them mentioned, although I feel that the subject may be old hat, what can one do. Enough of my moaning ... are there any lists of recommended printers (and what is needed to work them) for each of the Speccies and SAM, if there are, may I be sent one.

Finally are there comprehensive listings around of which game/programs are compatible with which Speccy.

Yours sincerely, N.J.Shelley.

Quite a long one there. Please readers, try to keep letters short and to the point.

Anyway, Spectrums fall into three major groups. 48K, 128K/+2 and +3/+2a. On the 48K it is best to say that the older (earlier) the model the more tolerant it is to software quirks. Every 48K game/utility I've ever tried worked first time on my old issue 1 machine.

128K software works best on a Sinclair 128K+. Although the vast majority will work on a +2. Most 48K software will run in 48K mode on the 128K/+2 but there is some that fails due to changes in the 128's version of the 48K ROM.

The +2a can be improved by buying a conversion kit from B.G.Services otherwise, like the +3, there can be problems.

As to mods to software, well hackers have published pokes in the past to make some changes to programs but there are no commercial aids that cover whole lists of games.

It comes back to learning a bit about machine code and starting to hack into games yourself I'm afraid. **Ed.**

Dear Editor,

Thought, I'd let you know how as an elderly person I get on with coping with a long or awkward program to type in.

At work, one generally has a copying stand to place a book from which one copies. At home though the copying is done by placing the book or copy to one side of the 'writer'.

Unless one is a good typist, the process does tend to be error prone as one occasionally gets lost.

This I overcame by recording -VOICE - at a speed that I could easily type (find the keys) - using words that 'distinctly' describe the required key to be pressed, at the same time following the line with my finger so as not to lose my place, so reducing errors. I would start and stop reading and recording at any time.

When I had finished the listing, I would, at a good time to do so, listen to myself, at the same time, entering the

listing.

Felt I should make people aware of making things easy and getting things accurate, hoping that the program listing wasn't corrupted initially.

I always used the phrase 'Newline' at the end of a line.

It can be hard job getting down to it but it saves a lot of heart ache.

Yours sincerely, E.A.A. Warwick.

Dear Editor,

I was very pleased to see your replies to several letters in recent **FORMAT's** about hardware upgrades to SAM.

I've owned a SAM since early last year but before that I was a Spectrum owner since 1983. I suffered from always backing the wrong type of joy-stick interface, the wrong printer interface and then the wrong disc interface. Each product looked good on paper but lacked support. At least I had to learn how to program - it was the only way to convert software for my 'non-standard' system.

In recent years I have been using an IBM PS/2 (286 based) for my job. Now I'm having difficulty buying software that will run on a 286. Everything is power hungry and disc hungry.

Let us all hope that SAM will progress, at a steady speed which all its existing users can follow. Please Mr West Coast Computers, don't leave us behind.

Yours sincerely, Paul Young.

I know how you feel Paul. Just two years ago my 386SX was powerful enough to run the best of software. Now, not enough memory, not enough speed, programs taking up 60 Mbytes of hard drive. Every time machines expand the programmers just seem to get lazy and use the extra power to cover their short comings.

Anyway. West Coast have promised not to expand SAM's features unless the new feature can be made available to existing users at a reasonable price. The

new SAM elite is a case in point. The printer interface matches the existing external one, the new drives can be fitted to old machines. **Ed.**

Dear Editor,

I wrote to artworks about images for the Spectrum. The reply was:-

"Unfortunately we do not produce images for the Spectrum, in the past the limited RAM of the Spectrum has prohibited the use of large images files.

I do not know if this would still be a problem with the disc based SAM Coupé, if there is an image file conversion program for your computer you might be able to import images in this manner."

Here ends the story, I do have the style writer with imager on the disc, would this do the job or can you help in anyway.

Yours sincerely, B.Tillotson.

I must be honest Mr Tillotson, I don't understand a word of what you are talking about. What, or who, is 'Artworks'? Is there some special meaning to the word 'Images'?

Perhaps you could drop us another line with a few more details. **Ed.**

Letters may be shortened or edited to fit on these pages although we try to edit as little as possible.

This is YOUR letters page so it is up to you to fill it with interesting things. Come on, get writing, any subject even remotely related to computers. Just keep things as short as you can so we can fit in as many as possible each month. Please write clearly or type your letters. Send them to the address on page 3 or fax them to us on 0452 380890.



"Why is it that the older you get, the longer the school holidays seem?"

SOFTWARE

SAM Coupé Software On 3 1/2" Disc

PCG's DTP PACK. The famous package including WordMaster, TypeLiner, HeadLiner. Complete on disc for SAM. R.R.P. £37.50. **SPECIAL READER'S BONUS** - Now includes 2 extra font packs worth £15.90 bringing the total pack value to £53.40.

Order Code: SCD-04 **Price:** £34.95

COLOUR DUMP. Screen dump software to work with Epson compatible colour printers. RRP £10.

Order Code: SCD-05 **Price:** £6.95

SAMSPEC SOFTWARE

SAM + Spectrum versions on one disc
(80 track 3 1/2" or 5 1/4" - please state on order)

FONT LIBRARY. 100 screen fonts plus support software, easy to use on either computer. Special +3 disc available (Spectrum files only). RRP £8.95

Order Code: SSD-01 **Price:** £6.95

MONEY MANAGER. Advanced personal budgeting system for both machines. Spectrum version needs 128K+2 (not +2a or +3). RRP £15.95

Order Code: SSD-02 **Price:** £12.95

SPECTRUM SOFTWARE

Unless otherwise indicated these are DISCIPLE/ PLUS D programs. Please state 3 1/2" or 5 1/4" disc (80 track only) on order.

ARTIST 2. The best art package ever written for the Spectrum. 48K and 128K versions on the same disc. With page-maker and utility software. Full manual. RRP £19.95

Order Code: SPD-01 **Price:** £16.95

UTILITY DISC #1. Six of the best and most useful disc utilities for DISCIPLE or PLUS D. Added bonus program - not to be missed. RRP £9.95

Order Code: SPD-02 **Price:** £6.95

PCG's DTP PACK. The famous package including WordMaster, TypeLiner, HeadLiner. R.R.P. £37.50. **SPECIAL READER'S BONUS** - Now includes 2 extra font packs worth £15.90 bringing the total pack value to £53.40.

Order Code: SPD-04 **Price:** £34.95

Special 3" disc version for +3

Order Code: SPD-04C **Price:** £36.95

HARDWARE

SPI - SAM's Printer Interface. A full feature parallel (Centronics) printer interface. Totally compatible with SAM's ROM and DOS printing routines and with utility programs like FLASH, Word-processors, etc. Uses standard BBC type lead (see below). RRP £24.95

Order Code: SPI **Price:** £19.95

>>>>

FORMAT

READERS SERVICES

PRINTER LEAD. Top quality parallel printer lead (BBC standard). 2 meters long. For use with DISCIPLE, PLUS D or SAM. RRP £10.95

Order Code: PPL-01 **Price:** £7.95

SAM COUPÉ TECHNICAL MANUAL Version 3.

The real inside info on SAM. As published by MGT/SAMCO. No SAM is complete without one. Now only available through us. RRP £16.95

Order Code: STM-01 **Price:** £12.95

MOUSE MAT & HOLDER. Top quality mouse mat (not to be confused with the small cheap ones) together with a handy mouse holder to keep your mouse out of harms way when not in use. Holder fits to any smooth surface with sticky pads provided. RRP £8.98

Order Code: SMM-01 **Price:** £5.95

FORMAT BACK-ISSUES

Volumes 1 and 2 are no longer available. Volumes 3 and 4 of **FORMAT** are now available only as complete volumes.

Order Code: FBI-V3 (Vol.3) **Price:** £12.00

Order Code: FBI-V4 (Vol.4) **Price:** £12.00

All issues, from Volume 5 N° 1 to the latest issue, are still available separately. To order just quote the Volume/Issue N°. **Price:** £1.50 each, (5 or more £1.25 per copy).

FORMAT BINDERS

Hardcover binders to protect your valuable magazines. Each will hold 12 copies of **FORMAT** (or any other A5 magazine or manual). Copies held in place by wires that just spring out for easy insertion or removal. Sorry, but we can't guarantee a specific colour (although we will try).

Order Code: FMB-01 **Price:** £4.50

ORDERING All prices include UK p&p, overseas readers please add 10% to total order for extra postage.

Clearly state Order Code, Product description, Quantity required and Price. Remember to add any postage and don't forget your Membership Number or we can't process your order. Payment in STERLING by Cheque (drawn on a UK bank), P.O. Euro Cheque or Cash. Make cheques payable to **FORMAT**. Payment MUST be in same envelope as order. Send to **FORMAT's** address on page 3. Normally dispatch is at the same time as your next issue of **FORMAT**. We will not be held liable for delays or non-delivery due to circumstances beyond our control.